

NB
1800
M47



NB

1800

M47

MEMORIAS



CORNELL
UNIVERSITY
LIBRARY



FINE ARTS LIBRARY

In Memoriam

“There is a voice from the tomb sweeter than song; there is a remembrance of the dead, to which we turn even from the charms of the living; these we would not exchange for the pleasure or the bursts of revelry.”

—WASHINGTON IRVING.

Note

Our designing department and executive office are located at Buffalo, N. Y.

Our work is finished at our plant at Barre, Vt., and from there shipped direct to destination, in a completed state, ready to set in the cemetery.



References

Financial:—Dun's or Bradstreet's; People's Bank, Buffalo, N. Y.; Granite Savings Bank and Trust Company, Barre, Vt.; or Granite National Bank, Quincy, Mass.

Integrity and Ability:—Our clients.

(See names in back of booklet.)

50
SC

McDonnell & Sons
MAKERS OF MEMORIALS

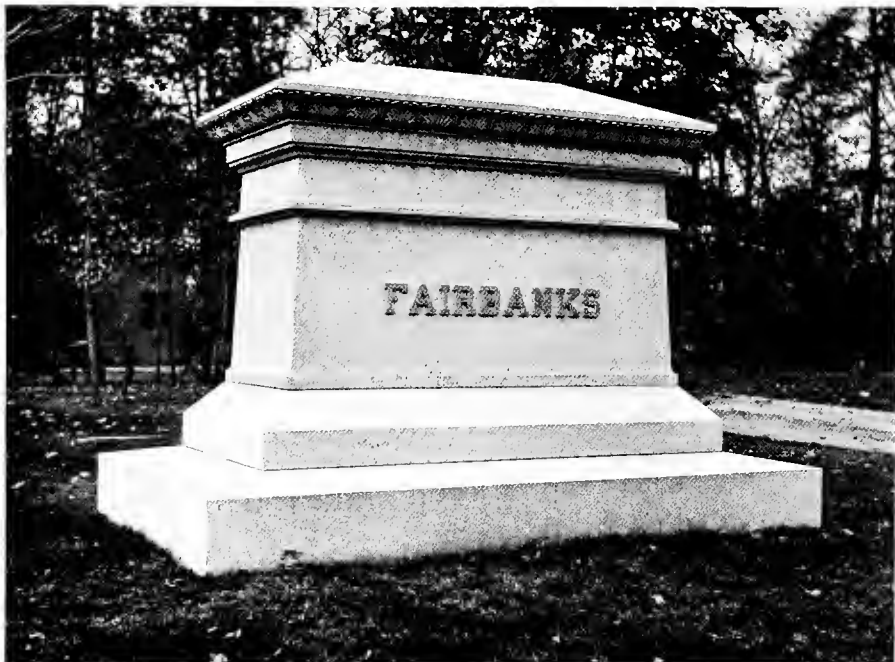
Quarries and Works at
Barre, Vt.

QUARRYMEN
DESIGNERS
BUILDERS

ESTABLISHED 1857

Executive Office and Designing Rooms
Buffalo, N. Y.
858-860 Main Street

Western Office, Indianapolis, Ind.



Memorial erected at Springfield, Ohio, by Hon. Chas. W. Fairbanks, former Vice-President of the United States, in memory of his father. Designed, executed, and erected by us.

UNITED STATES SENATE,
WASHINGTON.

February 3, 1904.

Gentlemen:

Your favor of the 30th of January is received.
I am pleased to say that McDonnell & Sons of Buffalo, N. Y., erected a monument at Springfield, Ohio, in memory of my father and other members of the family. The work was most admirably well done and gives us all the utmost satisfaction. I do not know of any one who does more artistic and substantial work.

Very respectfully,

Chas. W. Fairbanks

Messrs. McDonnell & Sons,
Buffalo, N. Y.

Introductory

NOTE:—"The best is invariably the cheapest," and this will apply more truly to a memorial than to any other work, as it is intended to last longer and withstand greater exposure than any other production.



THOSE contemplating the erection of memorial work, being, as a rule, quite unfamiliar with the many details of the subject, oftentimes feel unprepared for such a responsibility. It is with this in view that we venture, with intended delicacy, to touch upon a theme associated with the highest sentiments of life and death, and have issued this booklet endeavoring to make it interesting and instructive.

In a work of this nature, involving so many points which must be left almost entirely to the trustworthiness of the contractor, it is obvious that too much care cannot be exercised in appointing those whose facilities promise the highest character of work, and whose responsibility insures its most faithful execution.

Our long experience in every department of monumental work, the extent and completeness of our facilities, and the fact that we own and operate our own quarries and manufacturing plant, enable us to offer many advantages, not only as to the "character" of the work itself but the cost at which we are able to produce it.

Several Views of Our Quarry and Manufacturing Facilities



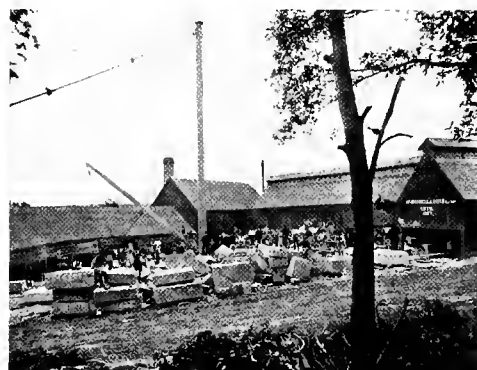
Barre, Vt., Manufacturing Plant.



Interior Barre Plant.



Barre Quarry.



Old Quincy Manufacturing Plant.



Barre Quarry in which we hold interests.




Old Quincy Quarry.

We were one of the first, and to-day are one of the few quarry owning and manufacturing firms who sell direct to the cemetery lot owner at first cost.

Our Barre, Vt., interests are in personal charge of Robert Q. McDonnell, who, after leaving college, served his full apprenticeship cutting, lettering, and carving granite.

Our Facilities

NOTE:— The material for practically all the better grade of memorial work erected by granite dealers throughout the United States is obtained in New England, principally at Barre, Vt., and Quincy, Mass. The work is finished, as a rule, ready to set in the cemetery, in the large plants located near the quarries.

ROSPECTIVE purchasers, especially residents of the larger cities, are at times inclined to hesitate when we ask the privilege of competing for memorial work, thinking they can do as well, if not better, in their own localities. Therefore, our facilities are here outlined and illustrated as a basis of our contention that we are in an unsurpassed position to design, execute, and erect high-grade and artistic memorial work at the lowest possible cost.

Established in 1857 at Quincy, Mass., then and now one of the greatest granite centers, this house grew and prospered until in the early eighties our volume of business compared favorably with that of any competitor.

Our first manufacturing plant consisted of a cutting shed; then a polishing mill was added, granite polishing machinery being installed by us among the first after its invention. Later, upon the introduction of pneumatic tools, which have proved a second great labor-saving device, a compressed-air plant was installed, this long before competitors generally realized the importance of the new invention. In 1880 we opened quarries at Quincy, equipping them with the heaviest and most modern machinery.

In 1892, appreciating the rapid progress of Barre, Vt., in the granite industry (it now being the greatest granite center in the world), as well as the excellence of the granite obtained there, we purchased a quarry at that point and have since acquired interests in other Barre quarries. We are now installed at Barre in one of the most up-to-date granite manufacturing plants in the world, equipped with every modern device for the execution of the highest and most artistic grade of memorial work, at the lowest possible cost. Our work is done under the personal direction and supervision of a member of this firm, who makes Barre his permanent residence.



Memorial erected for Ex-Mayor Henry Ziegenhein at St. Louis, Mo. Barre granite.

To Ziegenhein, Pres't

P. J. Davis, Cashier



McDonnell & Sons,
Buffalo, N. Y.

St. Louis, Mo., January 10th. 1904

Dear Sir:-

Enclosed please find check in full of account. I am pleased to state that the monument is in every way satisfactory to me; in fact, the work speaks for itself.

If this letter will be of any service to you, will state that I found I could do better with you than with any of the St. Louis firms or any other competitors, both as regards design and price. Your setters were not only courteous, but exercised great care and were extremely skillful in handling the large stone composing the memorial.

It will be a pleasure to recommend you to any of my friends desiring work in your line.

Respectfully yours

The Firm

NOTE:—For over forty years we have been in the front ranks of American granite firms and have enjoyed a reputation for integrity and responsibility.



BVIOUS it is, that any firm that has done a successful business for over half a century, whose policy has always been a progressive one, whose earnings for three generations have gone back into the business for improvements and extensions, and whose members have received educations and have had practical experience particularly fitting them for their respective positions, devoting their entire time and attention to promoting the interests of the firm, should be in an unexcelled position to compete successfully.

All of the members of McDonnell & Sons were born in Quincy, Mass., and have been in close touch with the granite business since childhood. The four junior members (the grandsons of the founder of the house) received their education in the leading colleges and technical schools, subsequently fitting themselves in a practical manner for their future responsibilities in connection with every department of the business.



BLOCHER mausoleum in Forest Lawn Cemetery, Buffalo, N. Y. Probably the most widely known private memorial in the United States. Designed and modeled by Mr. Blocher. Granite work executed and erected by us.

The bell-shaped stone and the circular stone directly beneath surmounting the pilasters were the largest pieces of granite ever quarried and shipped by rail in this country up to 1885, the date of the erection of the Blocher memorial. The circular-topped openings are protected by heavy plate glass, and statues of Mr. and Mrs. Blocher and their son, executed in Italian statuary marble, are placed in the interior.

Two Notable Private Memorials Erected by Us

BECKER memorial, designed and erected by this firm, in Forest Lawn Cemetery, Buffalo, N. Y., the largest all polished monument in this country, constructed of three stones of immense size.

The bottom base is twelve feet square; die, or upper stone, eight feet square and fifteen feet high. The shipping weight of die alone is over fifty tons. A bronze medallion of Hon. Philip Becker, a number of years Mayor of Buffalo, is placed on face of the die or upper stone. The monument is constructed of extra dark Quincy, Mass., granite.



Our Buffalo Office

NOTE:—A New York or Chicago office does not enable a firm in this line of business to furnish more artistic designs, execute work in a more satisfactory manner, or quote lower prices than a firm with a central office located elsewhere. No matter where the office is situated the granite work will probably be quarried and cut in New England.



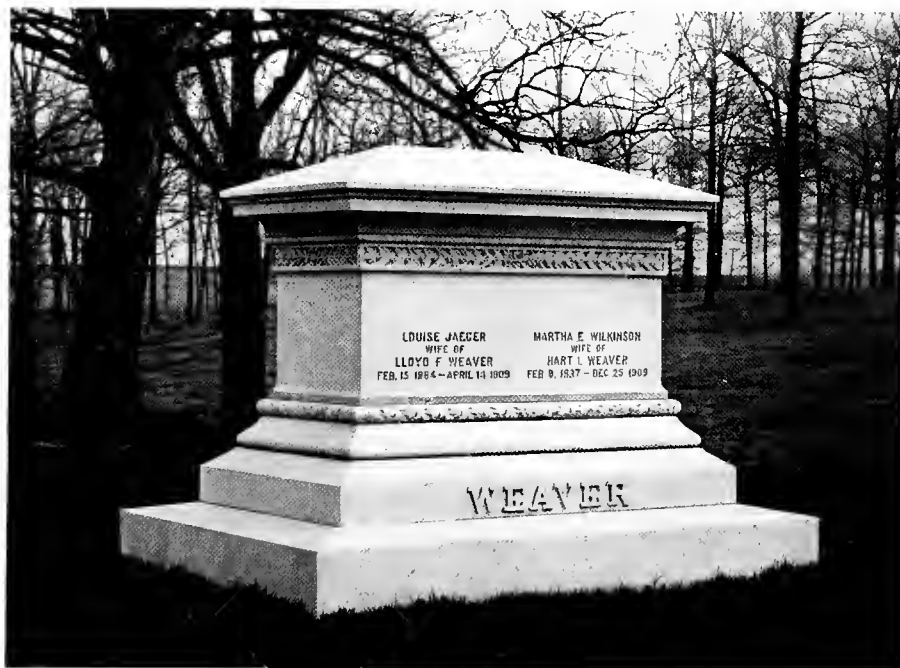
IN 1883, after devoting our attention exclusively to the wholesale business for twenty-six years from our quarries and manufacturing plant at Quincy, Mass., we realized that, owing to the competition which had gradually developed amongst the retail granite merchants, the time had come when it was practically impossible to furnish the very highest grade of material and workmanship and secure from the average retail buyer a price containing two margins of profit: one for the retail dealer, the other for the manufacturer. Moreover, the financial responsibility of the majority of the retail dealers was a constant menace to the safe conduct of our wholesale business.

Under the existing conditions we determined to open a retail department, selling direct to the cemetery lot owner at first cost. After careful study of the granite trade situation in various parts of the United States, we selected Buffalo as a convenient point at which to locate a central main retail sales office, bringing ourselves in close contact with our different salesmen, east and west, and, moreover, save to a great extent the extraordinary expense, office and otherwise, necessarily incurred by our principal competitors located in larger cities, such as New York and Chicago.

That our policy has been successful, is evidenced by our work standing to-day in the principal cemeteries of the United States. Buffalo is the headquarters of our designing, selling, and corresponding departments. Our manufacturing is done principally at Barre, Vt., and the finished product shipped direct to the point where a sale is made, ready to set up in the cemetery.



Erected for John F. Lust at Marion, Ohio. Material, Barre, Vt., granite.



Erected for Hart L. Weaver at LaPorte, Ind. Material, Barre, Vt., granite.

Estimates

NOTE:—We have numerous letters in our files testifying, not only to the quality of our work but to the fact that our clients found, upon investigation, our designs were the most satisfactory and our prices reasonable.



WE fully realize that persons about to place a contract for a memorial are usually importuned by representatives and members of local and other firms, and for that reason we hesitate to annoy prospective clients by personal solicitation unless we receive direct encouragement.

We are always ready and willing to submit preliminary sketches and estimates, in competition with others, no matter how small or how large the prospective order may be. This entails no obligation, and there need be no hesitancy whatever in calling upon us in this respect.

A person communicating with our main sales office, 858-860 Main Street, Buffalo, N. Y., or our Barre, Vt., quarry house, giving an outline of the style of memorial preferred, if possible, by referring to some of the illustrations in this booklet, will in a few days receive the information requested together with drawings and estimates if required. Information regarding the approximate amount to be expended will be of material assistance to us, as nearly every design can be proportioned on different sizes, the cost varying accordingly.

Our representatives, who are thoroughly experienced, having in every case been connected with us for a number of years, will, when requested, call upon you and offer any advice and counsel upon the subject you may desire. This information will be gladly given.



We have constantly on hand a large number of special designs of small monuments, markers, and headstones, including many new and original conceptions, which we can place in any part of the United States at moderate cost.



If you are interested, please correspond with our main sales office, 858-860 Main Street, Buffalo, N. Y., stating the style of memorial desired and any other particulars upon which you have decided.



Smaller Work

NOTE:—No matter how small an order you desire to place, or in what part of the United States or Canada the work is to be erected, do not hesitate to write us for designs and estimates.



WHILE we have executed some of the heaviest and most notable memorials erected in recent years, our sales to a large extent consist of small orders, and each and every commission entrusted to us, large or small, is given the most careful attention and consideration. Our aim has been to make each piece of work, whether it be a small headstone or a large mausoleum, the best of its kind.

We will be pleased to submit sketches and estimates on markers, headstones, tablets, and small monuments to be erected in any part of the United States or Canada. The finished work is shipped direct from our quarry houses in New England to destination, and as we can arrange to complete same in the cemetery, that is, have foundations built, haul, and set the memorial, as reasonable as the local dealer, we can sell at first cost.

Rustic work is inexpensive and large dimensions can be given for exceedingly moderate prices. We have a large number of special designs and attractive original sketches of work of this class that we would be pleased to submit on application.



Memorial erected in East Walnut Hills Cemetery, Cincinnati, Ohio,
for J. W. and M. J. Freiberg. Material, Westerly, R. I., granite.

J.W.

ESTABLISHED 1855
FREIBERG & WORKUM,
Distillers
OFFICES 216 to 220 East Front St.,
DISTILLERIES:
LYNCHBURG, OHIO.
PETERSBURG, KENTUCKY.
CINCINNATI.

CINCINNATI

Dec. 26/05

Mess. McDonnell & Sons,

Buffalo, N. Y.

Dear Sirs-

We own your favor of the 22nd inst. and in reply thereto, would say that the monument that you built for us, and erected in the United Jewish Cemetery, Walnut Hills, of this city, has proven most satisfactory in every way. The quality of the material and workmanship could not be better, and we have heard nothing but praise about it.

Yours truly,

John J. Freiberg

Question of Design

NOTE:—Our designing department is unexcelled. We have in our employ and closely affiliated with us, some of the best designing talent associated with this industry. We are constantly adding to our extensive collection of artistic and original designs.



DESIGNING of memorial work is a distinct profession. It requires special study, practical experience, a knowledge of the materials used in the construction of work of this kind, and, to be successful, the designer must be a person of artistic temperament. The practicing architect, or the designer of art-glass windows and interior decorations, is as much of a failure on the one hand in the designing and construction of memorial work, whether it be a simple monument or a mausoleum, as is the average monumental dealer on the other, who is generally a practical stone cutter, but whose knowledge of architecture is exceedingly limited.

Local dealers, as a rule, sell from stock designs, cuts, or photographs of work erected in various parts of the United States, principally by other firms. Frequently, they take contracts to duplicate monuments exhibited in photo form which they have never seen, or the original dimensions of which they have not secured, with the result that on completion the work is anything but satisfactory, neither proportioned nor executed in the same manner as the design submitted.

We have in our employ artists who have made a life study of monumental architecture, whose skill and art are expressed in what are conceded to be among the most beautiful and artistic memorials executed in recent years. These men not only prepare our preliminary sketches and finished drawings but also the full size details of the work we execute.

We have in our possession several hundred designs prepared along new and original lines, covering all sizes and styles of memorials, from a simple marker to elaborate monuments and mausoleums, and will gladly forward to any address a selection from same.



Low massive sarcophagus monument erected in Forest Lawn Cemetery, Buffalo, N. Y., for the Estate of Hon. W. I. Buchanan. Material, Barre, Vt., granite.



Sarcophagus memorial with concave lines erected in Crown Hill Cemetery, Indianapolis, Ind., for Estate of John A. Schumacher. Material, Barre, Vt., granite.

Material

NOTE:—Different grades of granite of the same name, obtained in the same locality, frequently out of the same quarry, vary in value over fifty per cent.



THE question of material is an important one, since upon this depends not only the present beauty of the structure, but its capability to withstand the action of the elements and the effects of time.

Hundreds of various granites and marbles are quarried in the United States for monumental purposes, but the great majority of these materials are entirely unsuited for outdoor memorial work, particularly for that to be placed in the northern states.

There are several standard granites which have been tried and tested for years, and even these can be obtained in very poor grades and qualities. A person specifying a certain granite cannot feel assured that they are getting the best unless they are dealing with a perfectly responsible firm, and even such firms when they have to sublet their work are frequently disappointed in receiving imperfect and inferior stock. Defects in granite, particularly sap and iron, can be drawn out of the surface in such a manner that they cannot be detected by an expert until after the material is exposed some months to the elements.



Square or cottage type of memorial, erected at Gloversville, N. Y., for the Estate of Samuel H. Shotwell. Material, Barre, Vt., granite.

Barre Granite

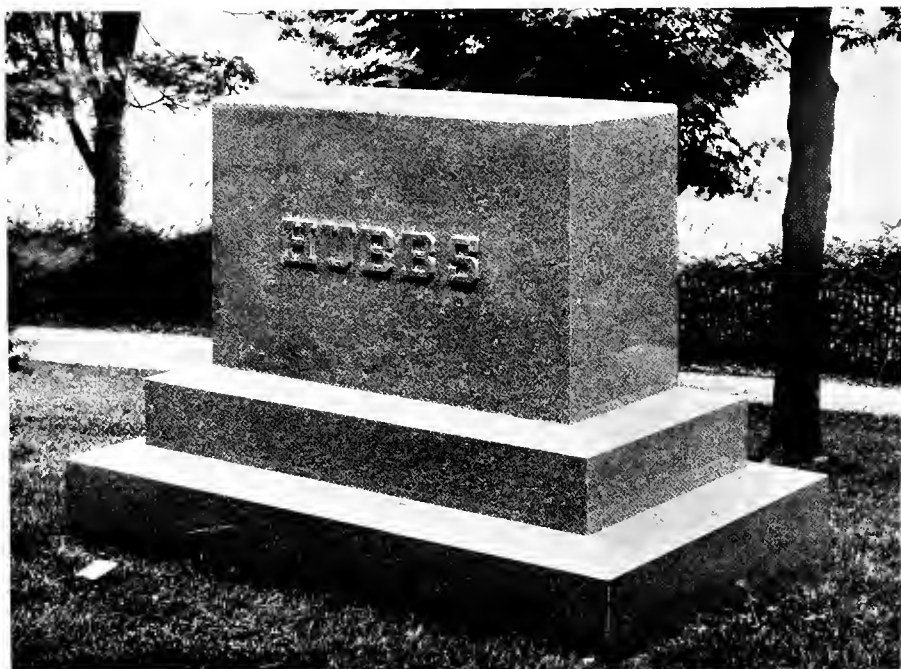
NOTE:—At least seventy per cent. of the largest and finest work erected in the leading cemeteries of the United States in recent years is constructed of Barre Granite.



THE selection of the particular kind of granite to be used in a memorial should be left to a certain extent to the judgment of the designer. The materials generally used in memorial work in this country at the present time are the granites obtained from the quarries at Barre, Vt.; Quincy, Mass.; and Westerly, R. I.

At Chicago, in 1893, Quincy granite was awarded First Prize as a monumental granite, principally on account of its adaptability for polished surfaces so prevalent in the monumental designs of that time. At St. Louis, in 1904, Barre granite was awarded the Grand Prize for its general fitness for monumental and mausoleum work.

The quarries at Barre, located in the central part of Vermont, were first opened about eighty years ago, although it was not until the year 1880 that the splendid qualities of Barre granite were generally recognized. In the past thirty years, however, it has acquired a reputation surpassing that of all other granites of modern times, and there are more cutters employed to-day in Barre than any other two granite centers in the world. Barre in hammered surfaces is a remarkably white granite, and in the better grades is exceptionally free from iron, knots, streaks, discolorations, and unevenness of grain so common to other granites. Being a fine-grained stone, it admits of the highest conception of the art of the sculptor, and its durability is unsurpassed; in fact, it is practically the one white granite that is not porous, and, consequently, retains its original color and beauty an indefinite length of time, provided it is not so placed as to be discolored by trees, which will affect any granite. These facts account for the popularity of this material and the marvelous growth of the industry. Light and medium-colored Barre granite are particularly adapted to hammered, carved, rock-faced monuments of any design, vaults and mausoleums. Dark Barre is preferred by many of our clients in polished work.



All polished sarcophagus, erected at Evansville, Ind., for John E. Hubbs of St. Louis, Mo. Material, Quincy, Mass., granite.



An all polished reproduction of Napoleon's Tomb, Paris, erected in Rural Cemetery, Albany, N. Y., for Herman Myers. Material, Quincy, Mass., granite.

Quincy and Westerly Granites

NOTE:—If you prefer an all polished monument, do not hesitate to select Quincy granite. Westerly is well adapted to statuary.



QUINCY, MASS., is located on Massachusetts Bay, several miles from Boston, on the south shore. This granite is of a coarse grain and in polished surfaces runs from a dark grayish blue to almost a black shade, and probably takes a higher and more lasting polish than any other granite obtained. This material has been quarried for almost two hundred years, although it has only been since the introduction of polishing machinery, some forty years ago, that it has attained its wide reputation and large sale as a monumental granite.

Westerly is located in Rhode Island on Narragansett Bay. With the exception of Barre and Quincy, this is the most popular granite used for cemetery memorial work in this country. Blue, white, and pink Westerly are very fine-grained stones, particularly suitable for statuary and elaborate carving. The quarries are exceptionally hard to work, making the stone very costly. We finish considerable of this material, and would gladly quote prices on same when our clients prefer this particular granite.



Erected for the Robert B. Adam Estate, Forest Lawn Cemetery, Buffalo, N. Y. Barre, Vt., granite.

Workmanship

NOTE:—An artistic design poorly finished is unsatisfactory at first, and the longer it stands the more apparent its defects become.



NEW purchasers of memorial work appreciate how readily the finish placed on granite work can be slighted. A manufacturer can save from ten to fifty per cent. on the cost of a memorial by employing apprentices, or having a skillful man rush the finishing of either plain surfaces or moulds, and particularly lettering and carving.

The retail monumental dealers almost invariably sublet their contracts at the granite centers for the finished work, cars quarry, after submitting same to practically indiscriminate competition, the lowest bidder, as a rule, securing the order. The price paid is frequently less than the actual cost of high-grade work. Foreseeing a number of years ago that this would eventually be the condition in this industry, we determined to sell the cemetery lot owner direct.

Many retail firms claim to have quarrying and manufacturing facilities at the New England granite centers, but no great investigation is necessary to prove such is not the case. Skilled mechanics are not at all plentiful, and many of our men have been with us upwards of thirty years. We pride ourselves on their ability, on our success in retaining them in our service, and on the work they execute.



Mausoleum erected in Woodlawn Cemetery, New York City, for Herman Wronkow. Material, Barre granite.



Mausoleum erected in Crown Hill Cemetery, Indianapolis, Ind., for N. Booth Tarkington. Material, Barre granite.

Mausoleums

NOTE:—A pleasing design, or set of details, does not always assure a satisfactory mausoleum. Small dealers or contractors, with little or no experience in mausoleum construction, can easily procure them.



WHEN Artemisia, the widow of Mausoleus, King of Caria, desired to perpetuate the memory of her husband, she departed from the usual form of a memorial then in vogue, and, about the year 352 B. C., created a new style of sepulchral monument which since then has been called a *mausoleum*.

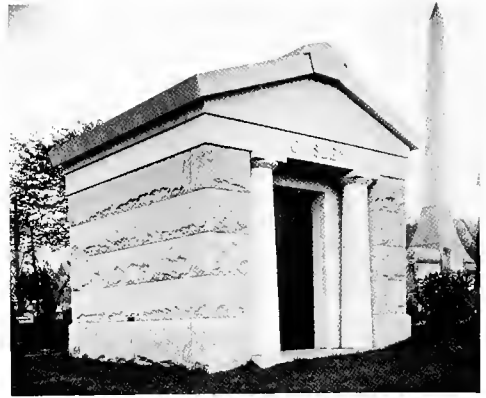
The designing and erection of a mausoleum, involving, as it generally does, the erection of a building of large proportions and architectural merit, is a serious matter, and it is a worthy subject of careful thought and thorough consideration. It requires the genius, not only of an architect who is constantly giving this class of monumental art his whole and undivided attention, but, also, a contractor whose experience and facilities insure the faithful execution of the plans selected.

The ability of our architects, who have made this class of work a life study, together with our long experience in mausoleum building,—extending over a period of thirty years,—our unexcelled manufacturing facilities, and the advantage of having constantly in our employ expert and conscientious granite and interior marble setters, enable us to keep in touch with the constant march of modern improvement in the designing, construction, and erection of buildings of this character.

Moreover, the preparation of the plans and details, the disposition of the body or bodies within the building, the selection of the materials used, the assembling of the completed parts, the arrangement of our system of ventilation and drainage, and the erection of the structure in the cemetery, are all under the constant and direct supervision of members of this firm, who have given mausoleums special study, and who have been consulted on the subject on numerous occasions by some of the leading architects of the United States.



Erected for R. W. Massey, Elmwood Cemetery, Birmingham, Ala. Barre granite.



Erected for C. H. Owsley, Oak Hill Cemetery, Youngstown, Ohio. Barre granite.



Erected for John J. McGrane, St. Mary's Cemetery, Troy, N. Y. Barre granite.



Erected for Marco Laurenzi, St. Mary's Cemetery, Washington, D. C. Barre granite.



Erected for Asa S. Dutton Estate, Cypress Hills Cemetery, Brooklyn, N. Y. Barre granite.



Erected for Mrs. A. J. Crawford, Highland Lawn Cemetery, Terre Haute, Ind. Barre granite.

Some Mausoleums Designed and Erected by Us

Akron, Ohio
Mrs. Emma Mustill

Albion, N. Y.
Mrs. T. F. Root

Anderson, Ind.
Mrs. P. H. Kilgore

Belmont, N. Y.
Hon. Hamilton Ward Estate

Big Run, Pa.
A. M. McClure

Binghamton, N. Y.
W. J. Oathout
Henry A. Sheldon Estate

Birmingham, Ala.
R. W. Massey

Bluffton, Ind.
J. M. Buck

Buffalo, N. Y.
L. Franklin Messer
F. C. M. Lautz
Dr. Thomas Lothrop Estate

Charles Lautz
John Blocher
Townsend Davis
T. S. McFarland
James How
Adam Schell
Henry Morse
Edward Hodkiewicz Estate
J. T. Jones

Canton, Ohio
Mrs. L. J. Miday
Mrs. M. A. Hasler

Clinton, Ill.
Richard Snell

Columbus, Ohio
Henry Holtzman

Conneaut, Ohio
George J. Record

Dayton, Ohio
J. R. DeWeese

Decatur, Ill.
W. F. Busher
M. E. Schroeder
A. W. Conklin
Henry Mueller Estate

Delhi, N. Y.
M. and R. Mitchell

East Berlin, Pa.
W. G. Leas

Elkhart, Ind.
Vose Estate

Elwood, Ind.
Richard L. Leeson, Jr.

Erie, Pa.
George N. Coombs
Hon. J. C. Brady Estate
E. W. Constable

Goshen, Ind.
C. C. Shafer

Harrisburg, Pa.
P. H. Vaughn

Indianapolis, Ind.
Hon. W. T. Durbin
Julius A. Hanson
Charles E. Hutton
Mrs. E. J. Knight
John H. Vajen
Joseph Deitch Estate
N. Booth Tarkington
Mrs. A. M. O'Brian

Jamestown, N. Y.
Robert C. Bradshaw Estate
Ralph J. Preston
Ralph C. Sheldon

Kenton, Ohio
Robert Young
Lancaster, N. Y.
Hon. George A. Davis
Le Roy, N. Y.
E. H. and J. A. Butler

Logansport, Ind.
Mrs. Catherine Himmelberger

Lovington, Ill.
Stanton Adkins
M. T. Shepherd
Marshall, Mich.
L. F. Page
Geo. H. Southworth

Medina, N. Y.
Mrs. Myra H. Beach
Mrs. Susan Davey
New Castle, Ind.

L. A. Jennings
New York City
H. Wronkow
Asa S. Dutton Estate
I. Borchardt
M. Borchardt

Niagara Falls, N. Y.
J. T. Brundage
Hon. Jas. S. Simmons

Niagara-On-The-Lake, Ont.
Mrs. Charles Baur

Owego, N. Y.
F. M. Curtis

Paris, Ill.
A. J. Baber

Piqua, Ohio
Gen. Wm. P. Orr

Pittsburgh, Pa.
Hon. Robert S. Frazer

Platteville, Wis.
Mrs. Ella M. Huntington

Port Colborne, Ont.
Samuel Hopkins Estate

Rochester, N. Y.
Mrs. Susan Bevier
Frank Ritter

St. Marys, Pa.
John Kaul
Dr. Wm. Kaul

Sharon, Pa.
Forker Estate
Charles Bowers
Shelbyville, Ind.
John Beggs

Smethport, Pa.
Walter Williams
Henry Hamlin
Steelton, Pa.
Geo. W. Cumbler Estate
S. Zimmerman

Sullivan, Ill.
M. McDonald
Terre Haute, Ind.
Mrs. A. J. Crawford
Mrs. J. P. Crawford

Troy, N. Y.
John J. McGrane

Wabash, Ind.
Thomas McNamee
Wadsworth, Ohio
Jacob Detweiler

Warsaw, N. Y.
W. W. Hawley

Washington, D. C.
Mrs. Peter Latterner
Marco Laurenzi

Waukesha, Wis.
C. A. Haertel

Wayland, N. Y.
Hon. W. W. Clark

Williamsport, Pa.
C. M. Patterson
W. E. Sprague Estate
Mrs. Mary C. Irvin
H. and S. S. Brown
Youngstown, Ohio
Dr. W. L. Buechner
John T. McConnell
James Squires
C. H. Owsley

Zelienople, Pa.
David L. Starr



Monument designed and erected for the United States Government and the State of Indiana at Battle Ground, Indiana, marking the Tippecanoe Battle Field. Material, Barre, Vt., granite. Height, 92 feet.



Memorial erected at Detroit, Mich., in conjunction with Rudolf Schwarz, Sculptor, of Indianapolis, Ind., for the citizens of the State of Michigan, in memory of their late Governor, Hon. Hazen S. Pingree.

A Few of the Public Memorials Erected by Us

Gen. Geo. B. McClellan Memorial, Trenton, N. J.

Carter Harrison Memorial, Chicago, Ill.

Soldiers' and Sailors' Memorial, South Bend, Ind.

Hon. Samuel J. Tilden Memorial, New Lebanon, N. Y.

Eben Brewer Memorial, Erie, Pa.

Gov. Pingree Memorial, Detroit, Mich.

Tippecanoe Battle Ground Memorial, Battle Ground, Ind.

Warren County Soldiers' Memorial, Warren, Pa.

Laconia Soldiers' Monument, Laconia, N. H.

LeRoy Soldiers' Monument, LeRoy, N. Y.

Soldiers' Memorial, Madison, Ind.

Sarah Secord Memorial, Queenston Heights, Ont.

28th N. Y. Regiment Memorial, Culpeper, Va.

114th N. Y. Regiment Memorial, Winchester, Va.

Soldiers' Monument, Springville, N. Y.

Spanish War Veterans' Memorial, Indianapolis, Ind.

Rev. Dr. Shaw Monument, Rochester, N. Y.

Masonic Memorial, Evansville, Ind.

Firemen's Memorial, Buffalo, N. Y.

Soldiers' Monument, Corning, N. Y.

Historical Memorial, Andersonville, Ga.

Waukesha Soldiers' Monument, Waukesha, Wis.



Erected for Mrs. R. H. Pearson in Elmwood Cemetery, Birmingham, Ala. Barre granite.

Some of Our Patrons in Various Parts of the United States

These clients were practically all strangers to us. We secured their contracts by proving conclusively that our designs were the best, our prices right, and our reputation beyond question.

Adams, N. Y.
T. T. Carter Estate

Addison, N. Y.
Rev. W. H. Darcy

Akron, N. Y.
Mrs. Mary Little
Mrs. I. A. Rhodes

Akron, Ohio
Edward Oviatt
Mrs. Emma Mustill *
L. M. Erion

Alabama, N. Y.
Mrs. L. Norton

Alamo, Ind.
Joseph M. Willis Estate

Albany, N. Y.
Mrs. Sarah M. Crehan
John J. Maas
Clarence Valentine
Jacob Kelsch, Jr.
Mrs. Andrew Schreiber
Mrs. N. M. Van Lieu
Mrs. Anna B. March
Herman and Max Myers
Chas. F. Stowell
Mrs. W. H. Fillmore
Philip Votz
Mrs. M. A. Bright
Luther G. Eaton
Andrew S. Draper
Henry Zahn
Mrs. S. B. Wells
and many others

Albion, N. Y.
Mrs. T. F. Root *
Mrs. James Daley
Hon. John Cunneen
J. Castaldi
Mrs. C. J. Balcom
Mrs. Alice E. Groves
Joseph L. Houghton
Estate of Mrs. Alice Rupp
Henry Palmer
Wallace Eggleston
George P. Warner

Alden, N. Y.
Mrs. H. S. King
Arthur G. Hart
Mrs. Margaret Fix

Alexandria, La.
J. A. O'Shee

Allegan, Mich.
Henry Whitman

Amherst, Mass.
Prof. Wm. A. Stowell

Amityville, L. I.
Mrs. Alice A. Robinson

Amsterdam, N. Y.
P. B. Riley

Anderson, Ind.
Hon. W. T. Durbin *
Mrs. E. F. and A. W. Cox
Nathan Armstrong
Mrs. Nancy N. Matthew
Charles H. Ewing
E. B. Pierse
W. H. Irwin
Davis Bros.
S. E. Farmer
John Coburn
Mrs. P. H. Kilgore *
H. B. Reid
Hon. W. A. Kittinger
Mrs. C. H. McCullough

Andersonville, Ga.
Women's Relief Corps

Angola, N. Y.
William H. Race
Miss Mary E. Loton
J. M. Jewell Estate

Annapolis, Md.
Miss Anne E. Dorsey

Arcade, N. Y.
J. M. Witherel
Mrs. Mary W. Beebe
Mrs. T. C. Langdon

Arkansas City, Kan.
C. E. Beck
J. A. Ranney

Armor, N. Y.
Charles W. Fisher
Michael Bessendorffer
John Beals
Fred A. Engels
Mrs. Silas Salisbury
Henry E. Burgwardt
A. H. Tucker
Mrs. Abram Coon
Bever Crooker
Mrs. Frederick C. Vellacott
Moses Crooker
William Holmwood
Mrs. Francis J. Weld
Mrs. Mary A. Barlow
Mrs. Harriet Fisher
Mrs. Cynthia E. Sailsbury

Atlanta, Ga.
George Stallings

Attica, N. Y.
Mrs. W. A. Cooley
Mrs. Cora Seagert

Auburn, N. Y.
Mrs. M. E. Hennissey
Mrs. Mary I. Carroll
Rev. A. J. McCabe
Mrs. William Mobbs
Daniel J. Burns
Mrs. R. J. McCabe
Charles H. McIntosh
and many others

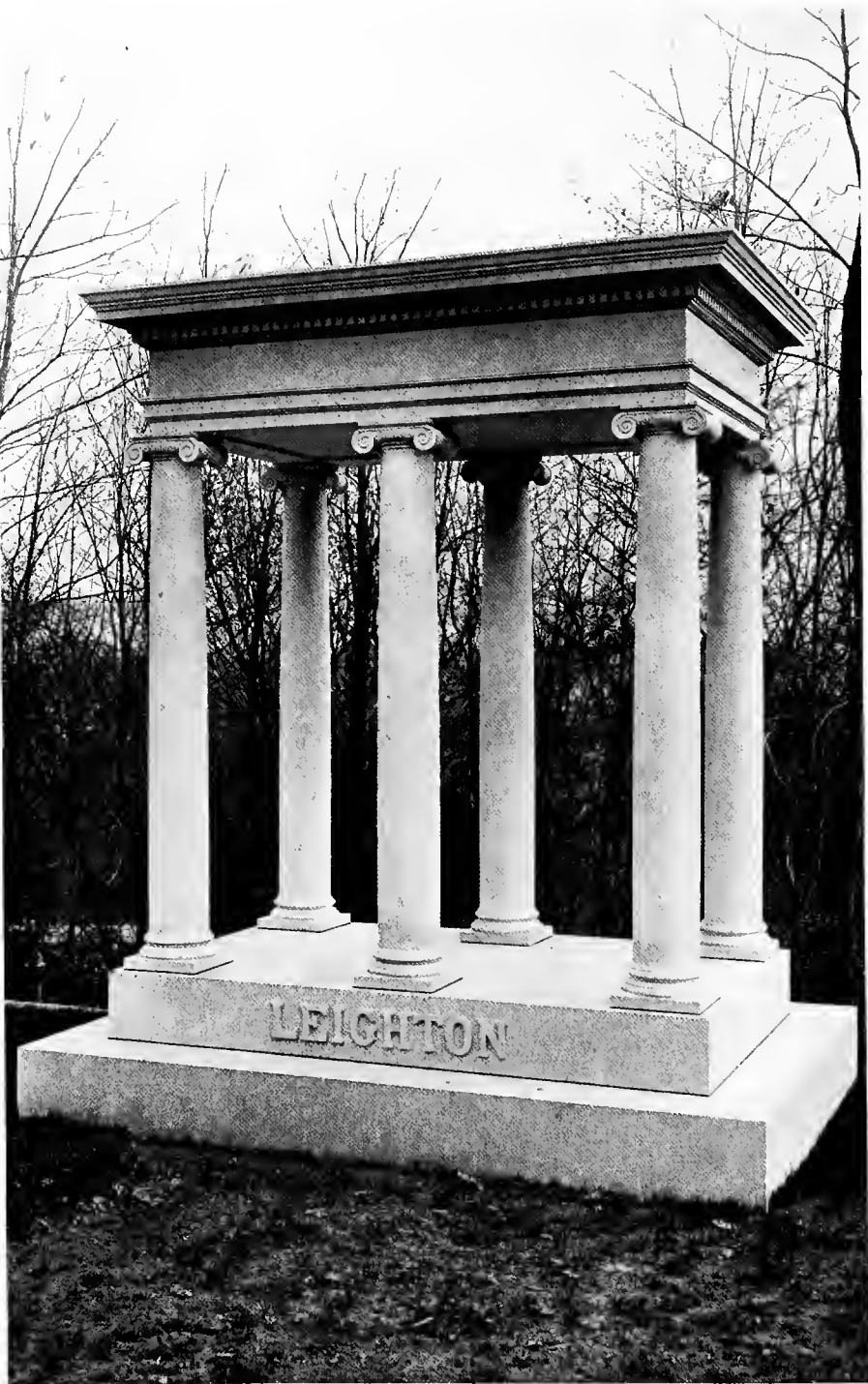
Avon, N. Y.
Mrs. J. C. Davenport
William Van Zandt
Mrs. James Quinlivan
W. G. Markham

Bainbridge, N. Y.
E. B. Paine
E. Danforth
William Fletcher

Baltimore, Md.
Miss A. McLaughlin

Barker, N. Y.
Mrs. Kate Murphy
J. McAvoy

* This star after a name indicates that the party has purchased a mausoleum of us.



Erected in Spring Forest Cemetery, Binghamton, N. Y., for Estate of Edward F. Leighton.
Barre granite.

Batavia, N. Y.

McLaughlin Bros.
Mrs. T. A. Manley
William E. Webster
W. G. Peck

Bath, N. Y.

David Rothchild
J. M. Ringer, Exec.
Mrs. William Hallock

Battle Ground, Ind.

Tippecanoe Monument

Bay City, Mich.

Henry B. Smith
Mrs. Frances Caughlin
Mrs. Wm. C. McClure

Beaver Falls, Pa.

Edward Bielman

Beech Creek, Pa.

George D. Hess

Bellefontaine, Ohio

James Roberts
John P. Cost
Mrs. Mary F. Bissell
J. B. Williams
Daniel B. Lindemuth
Mrs. Mary E. Williamson
Mack Dickinson
W. W. Fisher
Elam Buchwalter
John Lawrence
G. M. Stevenson
Mrs. W. S. Plum
E. G. Short
Frank P. Dickinson
C. Morgenroth
Samuel West
Mrs. L. M. McLaughlin
Mrs. John B. Helwig
T. L. Hutchins
Mrs. Robert Boyd
Mrs. John M. Riddle
Mrs. S. M. Thompson
Mrs. S. R. Thompson
Mrs. W. W. Riddle
John G. Campbell Estate
G. W. Renkert

Bellona, N. Y.

Isaac Clow
Hessel A. Beattie
Mrs. Charles Gates

Belmont, N. Y.

Hon. Hamilton Ward Estate *

Bennington, Vt.

Mrs. E. Gould

Bergen, N. Y.

Mrs. Henry Arnold
Michael Marion

Beverly, N. J.

Dr. A. W. Taylor

Big Run, Pa.

A. McClure Estate *
Mrs. Mary C. Irvin *

Big Tree, N. Y.

F. Wolf

Billsboro, N. Y.

Mrs. Anna Bond
Mrs. Emma Bond

Binghamton, N. Y.

Dr. C. D. Morris
Mrs. S. Ehresman
Miss Mary Gorman
Coe Tyler
Mrs. Margaret G. Harrold
Ed. L. Rose Estate
George Harding
Mrs. C. B. Waterman
Dr. F. D. Gridley
H. A. Sheldon Estate *
Mrs. Emily Grummond
Edward F. Leighton Estate
Mrs. Clara T. Maus
Miss Margaret O'Connor
Mrs. William Rood
W. J. Oathout *
and many others

Birdsall, N. Y.

William Manning

Birmingham, Ala.

Mrs. R. H. Pearson
R. W. Massey *
J. B. Adams
Robert Stephens
Mrs. F. Y. Anderson
Mrs. Chas. Roy

Black River, N. Y.

George G. Gillespie

Bloomington, Ill.

August Leuschner

Bluffton, Ind.

J. M. Buck *
Mrs. Harriet Montgomery
G. F. McFarren
Mrs. W. B. Nimmons

Bogalusa, La.

Mrs. William H. Sullivan

Bolivar, N. Y.

A. H. McDonnell

Boone, Iowa

Mrs. Carrie L. Phipps
Frank Hollenbeck

Boston, Mass.

Prof. Jarred Sparks Estate
Peter J. Connor Estate
Mrs. Julia Whelan
Hon. W. T. Fitzgerald
Charles T. Hall
W. L. Seifert
Thomas Miley Estate
John White Estate
C. I. Bailey
M. Miley Estate
Dr. B. H. and W. V. Grove
J. G. McLeod
John Good Estate
Henry R. Nuss
and many others

Bowmansville, N. Y.

Wood Estate
A. W. Haskell
Mrs. Catherine E. Seamans

Bradford, Pa.

W. H. Powers
F. W. Hastings
Mrs. N. E. Smiley
Fred Silberberg
R. E. Powers
Patrick Doyle
Alex. Urquhart Estate
Mrs. Katherine Sloan
Mrs. E. Herron
P. J. McMahon Estate

Brant, N. Y.

Hon. W. W. Hammond

Brazil, Ind.

John G. Bryson
C. H. Knight
Mrs. Eliza W. Culbertson
Robert A. Macbeth Estate
Major Collins Estate

Brisben, N. Y.

D. H. Towslee

Brockport, N. Y.

Mrs. R. A. Palmer Estate

Brocton, N. Y.

H. A. S. Thompson
R. A. Hall

Brooklyn, N. Y.

Mrs. L. R. Weber
Mrs. George H. Fernald
Mrs. J. H. Tapping

* This star after a name indicates that the party has purchased a mausoleum of us.



One of the largest obelisks in the United States, erected in Forest Lawn Cemetery, Buffalo, N. Y., for George F. Rand. Barre granite.

Brooklyn, N. Y.—Con.

Jacob Hentz
 Mrs. O. C. Swift
 Asa S. Dutton Estate *
 I. and M. Borchardt *
 Stephen J. McGarrigle

Broome, N. Y.

Theo. and G. L. Harding

Buffalo, N. Y. †

Volunteer Firemen
 Hon. Philip Becker Estate
 Mrs. Elizabeth Dickinson
 Hon. Chas. Daniels Estate
 Mrs. W. H. Grawick
 William Donaldson
 Mrs. David Donaldson
 Charles G. Irish
 Mrs. James D. Warren
 George W. Sweet Estate
 Mrs. Leonard L. Crocker
 J. F. Schoellkopf Estate
 Seth S. Spencer
 Dr. Bradley Goodyear Est.
 G. Frederick Zeller
 Hon. Chas. F. Bishop
 Mrs. Leonidas Doty
 John N. Scatcherd
 James G. Forsyth Estate
 Robert B. Adam Estate
 Arthur D. Bissell
 Edward E. Coatsworth
 Mrs. Nathaniel Brown
 George Urban
 Allan N. McNabb
 Mrs. J. C. Dann
 Chas. P. Uebelhoer
 Henry W. Sprague
 Bronson Rumsey
 Roswell R. Buck Estate
 William Hengerer Estate
 William H. Gardner
 E. G. Felthousen
 J. I. Prentiss
 George F. Rand
 Mrs. Andrew J. Rich
 E. C. Townsend
 Carleton Sprague
 Augustus F. Scheu
 Mrs. Philip Fuhrmann
 Mrs. William I. Buchanan
 George B. Montgomery
 Pendennis White Estate
 Very Rev. James A. Lanigan
 Philip Bachert
 August Hager
 Col. John Byrne

Buffalo, N. Y.—Con.

Chauncey Olcott
 Howard H. Baker
 Robert Loder
 John Kam
 Mrs. Henry F. Roesser
 Robert Donaldson
 Nathaniel W. Norton
 George C. Sweet
 George B. Mathews
 F. G. Bardol
 Maurice M. Wall
 Joseph E. Gavin
 George M. Heintz
 Leonard Dodge
 Frank M. Hollister
 Harvey Hurd
 Calvin S. Elliott
 Mrs. Charles Georger
 Leopold Warner
 S. Desbecker
 Joseph Block
 Hon. Louis Marcus
 Edward Michael
 Charles Lautz Estate *
 Samuel Rapin
 Louis Pfohl
 John Feist
 Hon. John R. Hazel
 J. Adam Lautz Estate
 Jacob Weppner Estate
 Christian Weyand Estate
 Joseph Endres
 Max Wahle Estate
 Peter J. Behringer Estate
 Very Rev. Nelson H. Baker
 James Ash
 Thomas Brown
 W. J. Conners
 Hon. Wm. F. Sheehan
 George Sandrock
 John F. and Wm. H. Burke
 Col. E. A. Rockwood
 Dr. Thomas F. Rochester Est.
 Hon. James M. Smith
 Mrs. George D. Plimpton
 Henry Zipp
 Mrs. A. P. Wright
 Dr. Francis Lobdell Estate
 Henry W. Wendt
 W. F. Wendt
 Hon. Edgar B. Jewett
 Mrs. R. O. Meldrum
 Col. James A. McArthur
 Hiram C. Day
 David F. Day
 Dwight F. Walbridge

Buffalo, N. Y.—Con.

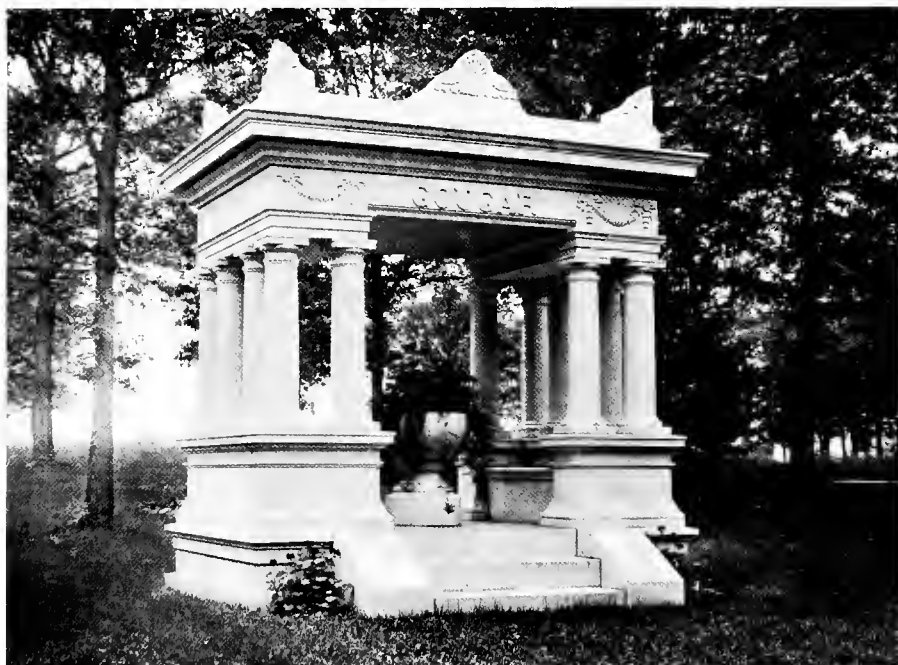
G. M. Wattles
 Dr. E. P. Hussey
 Isaac Altman
 William Simon
 John Abel Estate
 Mrs. E. B. McGowan
 Hon. W. H. Ryan
 A. S. Bemis Estate
 William I. Mills
 Mrs. Otto Ulbrich
 Conrad Machemer Estate
 Mrs. Fred J. Kelter
 Mrs. Cyrus P. Lee
 Col. John B. Weber
 Nelson Holland
 Col. Wm. Bloomer Estate
 R. R. Hefford
 C. J. Hamlin
 Mrs. Frank Hamlin
 F. O. and C. L. Bissell
 Mrs. James H. Kelleran
 Spencer Kellogg
 Mrs. Adam Hauck
 Mrs. Edward A. Schuesler
 Mrs. Casper Teiper
 Mrs. John Van Velsor
 Mrs. William B. Flint
 S. F. Hartmann
 George A. Ray
 Mrs. Wm. T. Becker
 Gibson T. Williams Estate
 Mrs. E. O. Cheney
 George Coit
 Wm. L. Marcy
 Mrs. H. H. Kirkover
 Christian Klinck Estate
 George Laub Estate
 Walter P. Cooke
 Edward G. Becker
 Hiram C. Marcus
 Mrs. A. J. Groben
 W. J. Sandrock
 Williams Lansing
 Isidore Michael
 E. D. Hofeller
 A. J. Elias
 James H. Lee
 George C. Bingham
 Samuel J. Dark
 William C. Warren
 Adolph Machwirth Estate
 Eugene Klein Estate
 Henry Koons
 Henry Rumrill
 E. H. Webster
 C. A. Lockhart

* This star after a name indicates that the party has purchased a mausoleum of us.

† We issue a special Buffalo booklet.



Erected for Charles H. Schrader in Crown Hill Cemetery, Indianapolis, Ind. Barre granite.



Erected for Estate of Helen M. Gougar in Spring Vale Cemetery, LaFayette, Ind. Barre granite.

Buffalo, N. Y.—Con.

Jansen Estate
 John Keenan
 Austin Hanrahan
 Rev. J. McGrath
 P. H. Cochrane, Admr.
 William Hurley
 Mrs. John Devlin
 Solomon Scheu
 Felix Ritter
 Rev. John D. Biden
 Rev. John J. Sheehan
 Cross-Catholic Cemetery
 Mrs. C. Baecher
 W. Kempf
 John J. Kavany
 Anton Hasselbach
 Cross-Polish Cemetery
 Peter Straub
 Holmes-Boland
 Wm. H. Rose Estate
 Henry Hitschler Estate
 Henry V. Bisgood
 Henry Erb
 Mrs. George J. Doll
 Mrs. William P. Gorges
 Mrs. Mary Collignon
 Peter A. Vogt
 John B. Winkler
 Casper Drescher
 Thomas Lovett
 Mrs. L. W. Godfrey
 Mrs. C. F. Gentsch
 Mrs. William Anderson
 S. S. Kingsley
 Mrs. John Bosche
 Rev. A. Unholz
 Alexander McMaster
 W. W. Sloan
 Alexander H. Sloan
 James C. Beecher
 Melvin Carpenter
 Ambrose Spitzmiller Estate
 Cornelius J. Planz
 Gerhard Huetter Estate
 L. and H. D. Kirkover
 Mrs. John G. Hanes
 Patrick Lawler Estate
 Ed. J. Walsh
 Sisters' Memorials
 Dr. F. S. Crego
 James R. Miller
 John Blocher *
 W. L. Loeser
 Mrs. Caroline Krauss
 James How *
 Adam Schell *
 L. F. Messer *

Buffalo, N. Y.—Con.

Henry Morse *
 Mrs. Thompson Hersee
 Farrar-Holloway
 Winspear-Joslyn
 Frank T. Voelker
 Mrs. Geo. R. Haines
 Charles A. Rupp
 Archibald C. Robson
 Mrs. Joseph M. Hennig
 F. C. M. Lautz Estate *
 Joseph Gareis
 Mrs. Regina Domedion
 Dr. Thomas Lothrop Estate *
 Hugh Hogan
 Mrs. Agnes Shalloe
 Dr. G. E. Mackay
 Michael Danahy
 Thomas Chambers Estate
 Clemens E. Rohr
 Jeremiah Gorman
 Mrs. Patrick McCabe
 Hon. John J. Kennedy
 Mrs. Abraham Altman
 Mrs. E. S. Husted
 Mrs. John Howell
 Mrs. E. Heron
 Henry H. Hale
 J. H. Mevius
 Haffa Bros.
 Mrs. Levi Allen
 Mrs. Mary E. Rohe
 E. R. Saxton
 Mrs. Robert H. Hebard
 Mrs. Peter Wohlers
 Mrs. James M. Merritt
 Mrs. Charles Elsworth
 Joseph Doll
 Mrs. A. Marcenowski
 Maria Jungherr Estate
 George Zimmerman
 Harry H. Voght Estate
 Louis L. Pfohl Estate
 J. Ginther's Sons
 Mrs. Wm. J. Hillery
 John Hanrahan Estate
 Maurice Courtney
 Mrs. James J. Godfrey
 Miss Grace Strachan
 Edward Hodkiewicz Estate *
 T. J. Lanahan
 Simon McMahon Estate
 Thomas H. Wall
 Daniel Mahoney Estate
 William J. Burke
 George Duchscherer
 Mrs. Henry C. Persch
 Adam Cornelius

Buffalo, N. Y.—Con.

Daniel Post
 Charles T. Hall
 Mrs. Azor B. Crandall
 Mrs. Charles Warfield
 Townsend Davis *
 T. S. McFarland *
 Mrs. Louise Storck
 Mrs. Mary A. Glor
 Hiram H. Smith
 Mrs. J. F. Demarest
 August Becker
 John O. Adsit
 Ganson Depew
 C. W. Holland
 Mrs. Clarence W. Hammond
 Elizabeth M. Fries Estate
 Anthony Schoenacker Estate
 Francis Weppner Estate
 Mrs. Matthew Wagner
 Mrs. Frank Trautmann
 Anthony Kaiser Estate
 Mrs. Louis Bapst
 Mrs. Julia Gwitt
 M. Pfluger
 Mrs. Josephine Trautmann
 Thomas J. Whalen Estate
 James Holmwood Estate
 Joseph W. Dooley
 A. J. Brady
 Chas. P. Woltz
 Mrs. Joseph A. Dingens
 Charles C. Schatlin
 Rev. Daniel Walsh
 Mrs. James H. Dormer
 Robert F. Schelling
 William F. Strasmer
 William Lansill
 J. H. Smith
 Charles Boller
 Mrs. William Meadows
 Miss Elizabeth La Tour
 Louis Stern
 H. B. Mixer
 W. P. Goodspeed
 Dr. George W. Lewis
 Hans Schmidt
 John Miller
 Mrs. M. LaClair
 Abraham Fybush Estate
 Peter J. Weigel
 Joseph Drexelius
 Charles H. Hogan
 Ralph G. Butler
 Mrs. Michael Leahy
 John O'Day
 Mrs. George W. Pfohl
 H. St. Clair Denny

* This star after a name indicates that the party has purchased a mausoleum of us.



Erected for the Dorrance family at Camden, N. Y. Barre granite.

Buffalo, N. Y.—Con.

Matthew Danahy
 T. P. Donovan
 J. J. Donovan
 Thomas J. Kavany
 John W. Derrigan
 Edward M. Regan
 T. J. Mahoney
 C. J. Meyer
 Florian Estate
 Fred Jehle
 Very Rev. M. P. Connery
 John Elliott
 James Franklin
 Jacob Scheu
 Mrs. C. Huetter
 Edward P. Murphy
 Thomas F. Crowley
 Mrs. James B. Wall
 Mrs. Richard Forrestel
 Daniel O'Day (Vase)
 John Rosenberger
 John W. Klauck
 John Benstead
 C. and J. E. Wesley
 Wm. A. Rix
 Walter J. Shepard
 Frederick Hettrich Estate
 Edward L. Jung
 John Donaldson
 John A. Barth
 Mrs. Albert Berrick
 Mrs. Samuel Laird
 Miss Catherine Strootman
 Peter B. Seereiter
 Jos. G. Gollwitzer Estate
 John J. Bonner
 Thomas M. Ryan
 A. J. Schreiber
 Capt. James W. Davidson
 Mrs. Anna Block Estate
 Edward Kener, Jr.
 W. W. Richardson
 H. A. Menker
 Joseph L. Blaney
 L. S. Kurtzman
 R. K. Bickford
 O. Bedell
 Mrs. Philip Houck
 C. B. Armstrong Estate
 D. F. Rust
 W. C. Russell
 H. B. Chamberlain
 John M. Chipman
 G. W. Francis
 Dr. W. V. Miller
 Mrs. Wm. S. Grattan
 Mrs. Nathan Wolf

Buffalo, N. Y.—Con.

Mrs. Wm. F. Dier
 A. A. Adamy
 William H. Race
 Conrad Baer, Jr.
 E. A. Georger
 Philip Stern
 C. Hummell
 Ferdinand Betz
 Franklin Lee
 Mrs. John H. Schmahl
 Mrs. James A. Love
 C. E. Pollard
 Robert Palen Estate
 Mrs. Caroline Schickel
 Alvin W. Day
 Mrs. David Strebel
 F. L. Talcott
 Mrs. William D. Doherty
 Mrs. John J. Sipp
 Mrs. Charles E. Selkirk
 Mrs. Hiram Waltz
 William Volk
 Charles Ullrich
 Mrs. J. G. Orr
 T. J. Gould
 T. J. Love
 L. E. Hersee
 Mrs. W. A. Dobinson
 Millard S. Burns
 Mrs. George Wadsworth
 W. L. Moffat
 Mrs. Frank Henafelt
 Mrs. Arthur Burtis
 J. L. Saperston Estate
 Madison Buell
 Peter P. Miller Estate
 Mrs. W. F. Wilson
 Henry L. Frick
 Edward P. Erion
 Richard Olivey
 Drs. F. M. and H. A. Hayes
 H. S. Sill Estate
 Mrs. E. B. Eagan
 Charles F. Kraft
 Miss Emma L. Lovejoy
 Mrs. Henry Sells
 Louis C. Maecker
 Dr. Mary I. Denton
 James W. Tift Estate
 Mrs. James Foster
 Horace Briggs
 L. M. Godfrey
 A. G. Bartholomew
 Mrs. Victor Speer
 Mrs. Alfred W. Thorn
 Edward Timmerman Estate
 Randolph McNutt

Buffalo, N. Y.—Con.

Capt. J. T. Jones *
 Valentine J. Newman
 and many others

Butler, Pa.

Mrs. Hugh F. O'Neil
 Miss Letitia O'Neil

Caledonia, N. Y.

W. G. Markham
 John McCorkindale

Cambridge, Mass.

Nathanial Holmes
 B. H. Farrell
 Miss Ellen Goode

Camden, N. Y.

John G. Dorrance

Canal Dover, Ohio

Miss N. C. Renkert

Canandaigua, N. Y.

John H. Benham
 Mrs. Ella Turner

Canastota, N. Y.

LeGrand Colton

Canton, Ohio

Mrs. L. J. Miday *
 Mrs. M. A. Hasler *
 Albert M. Dueber

Cardington, Ohio

Adam Wick

Carlisle, Ky.

Henry Pickrell

Carnegie, Pa.

Ralph J. Wick

Castile, N. Y.

Isaac C. Tryon

Castleton, N. Y.

Mrs. G. B. Withers

Cattaraugus, N. Y.

Dr. C. B. Pool Estate

Chaffee, N. Y.

G. W. Houghton
 Mrs. G. L. Rice

Charles River, Mass.

Edward Commons

Charlotte, N. C.

C. M. Patterson *

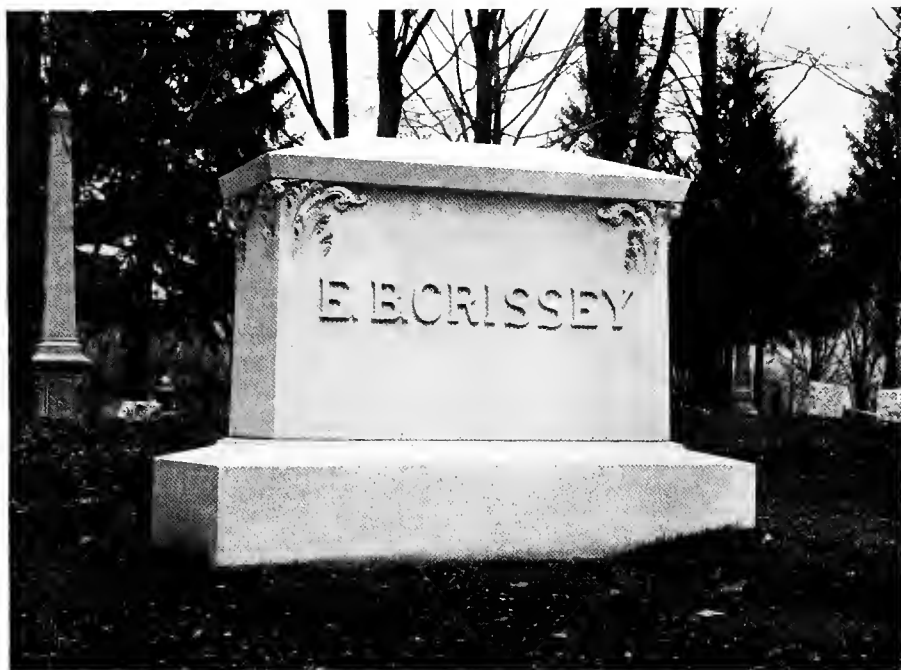
Charlotte, N. Y.

P. Keon
 Miss K. A. Rigney

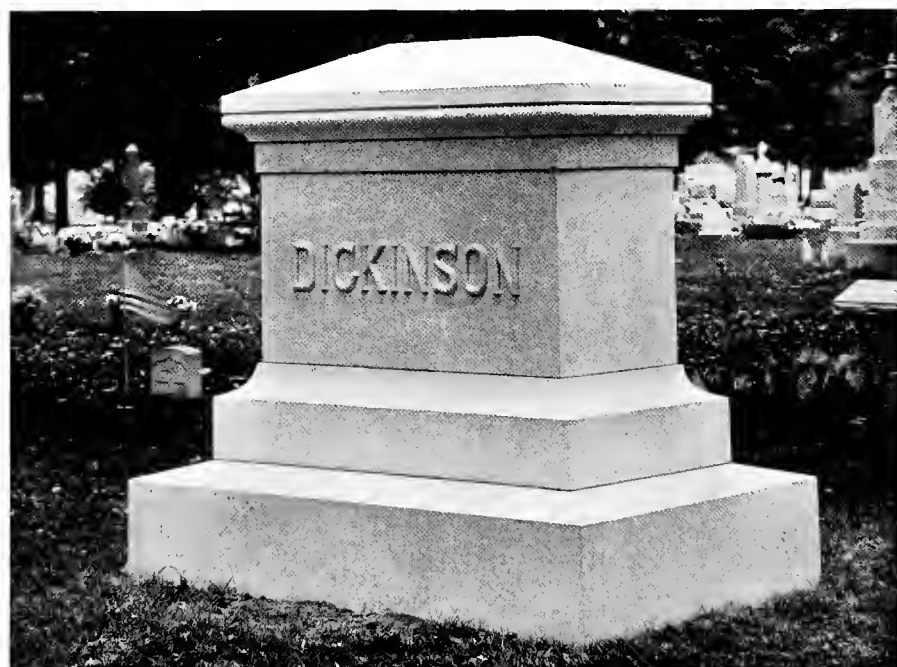
Chautauqua, N. Y.

Mrs. E. R. Skiff

* This star after a name indicates that the party has purchased a mausoleum of us.



Erected for Mrs. E. B. Crissey in Lake View Cemetery, Jamestown, N. Y. Barre granite.



Erected for Misses Jennie E. and Alice E. Dickinson in Crown Hill Cemetery, Indianapolis, Ind. Barre granite.

Chenango Forks, N. Y.

Uri Strickland
Charles Parsons
Weller Roos

Cherry Creek, N. Y.

George Frost
Mrs. Catherine Whaley

Chicago, Ill.

Henry Newton
S. H. Woodbury
J. F. Alexander
Mrs. N. F. Nickerson
Sylvester T. Smith
Mrs. Palmyra A. Thayer
Dyke Williams
Mrs. A. K. Shepard
Frank H. Roberts
James D. Williams
Mrs. F. E. Livengood
James M. Burns
Geo. W. Newcomb
H. C. Eddy
B. Callaghan
Walter Williams *
W. W. Thayer
Wm. P. Ketchum
M. W. Kerwin
Thomas Kelly
Mrs. Eva Lauten
Chas. F. Loesch
Mrs. Michael Shields
and many others

Cincinnati, Ohio

John H. Duncan
Chas. Bowers *
J. W. and M. J. Freiberg
J. J. Fuller
Albert Lackman
Louis Goldman
Albert M. Dueber
Mrs. Wm. A. Rhodes

Clarence, N. Y.

Charles Burns
Frank Croop
Chas. Croop
Mrs. Kate Zook

Clayville, N. Y.

Byron E. Shear

Clearfield, Pa.

Mrs. A. F. Boynton

Clermont, Ind.

John Moore

Cleveland, Ohio

Andrew J. Draper
G. M. Godman
Henry Strong

Cleveland, Ohio—Con.

Miss E. C. Annin
James V. Morris
Philip J. Barth Estate
Mrs. Mary H. Jamison
Col. Felix Rosenberg
Mrs. H. D. Waters

Clifton Springs, N. Y.

Mrs. S. Giddings
Miss Margaret A. Dalton
Mrs. N. Harmon
Mrs. Daniel Crowley
Patrick Madden
Mrs. James Green
Mrs. Susan R. Elliott
James Brady

Clinton, Ill.

Richard Snell *

Clinton, N. Y.

A. C. Trowbridge

Cochran, Ohio

Miss Louisa Peters

Colden, N. Y.

Mrs. Salome Miller
Mrs. Carrie M. Miller
Mrs. Magdalena Miller

Columbus, Ohio

Alfred Thomas
Mrs. T. J. Driskell
B. S. Brown Estate
Ivor Hughes
Mrs. J. Brown
J. L. Dann
Major A. D. Rogers
Henry Holtzman *
Prof. Emerson E. White
Mrs. E. Converse
Robert Young *
Emory A. Everett
W. G. Dunn
Mrs. Z. Williams
Mrs. Charles H. Rockwell
Mrs. Leah Williams
and many others

Conneaut, Ohio

George J. Record *
Mrs. Harriet E. Thompson
Mrs. Robert Leitch

Connersville, Ind.

Mrs. Kate Roehl
Mrs. Malinda Claypool
O. P. Griffith

Corning, N. Y.

Rev. Dean Colgan Estate
Mrs. Emma Chaphe

Corning, N. Y.—Con.

Mrs. Relihan
John J. Clancy
Mrs. Anna Wall
Soldiers' Monument

Cortland, N. Y.

Thomas Phelan
Wm. R. Randall Estate
L. R. Hulbert
Hugh Duffey
D. W. Van Hoesen
Mrs. A. B. Weatherwax
Alex. T. Brown

Covington, Ky.

Charles J. Davis

Crawfordsville, Ind.

James M. Bishop
H. R. Tinsley
Miss M. Gilkey
Mrs. Amanda Davis
Mrs. Lydia Smith
A. E. Reynolds
M. D. Manson
M. A. McKnight
Mrs. J. K. Reynolds
Milton Hamilton
Mrs. W. S. Tapp
C. L. Thomas
Theodore H. Ristine
C. D. Voris
A. D. Thomas
John W. Fuller
Mrs. C. M. Safford
A. T. Thompson
J. S. Steel
Dr. I. A. Detchon
Joseph M. Willis Estate
Dr. J. F. Davidson
David W. Gerard
E. J. Pennefeather
Charles Johnston
Zook-Dochterman
Smith Family

Crittenden, N. Y.

Mrs. Conrad Miller

Culpeper, Va.

28th Regt. N. Y. V: Memorial

Custer City, Pa.

W. C. Eakin

Dansville, N. Y.

Edwards H. Pratt

Danville, Ill.

Mrs. H. M. Kimball

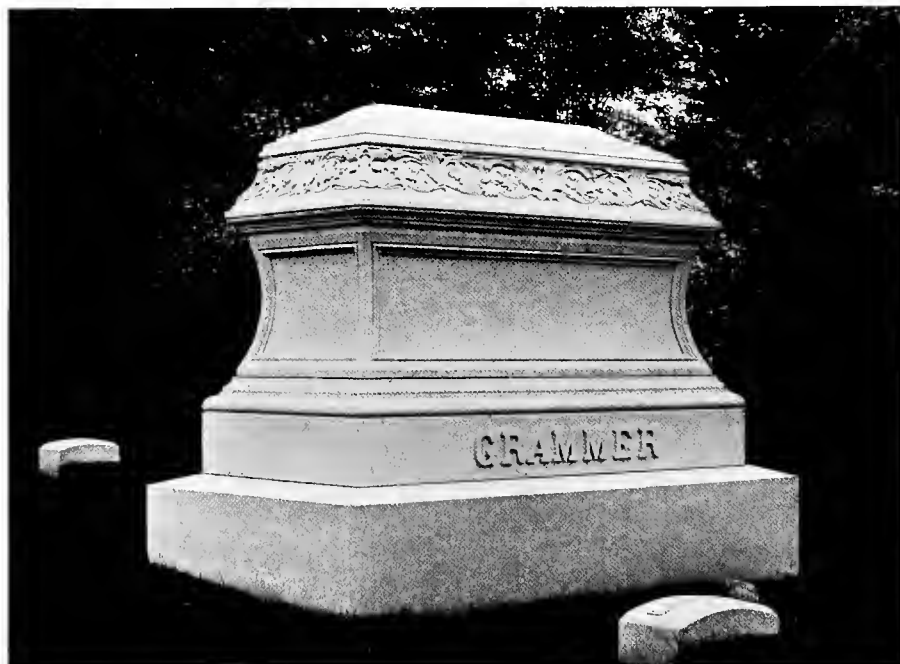
Darlington, Ind.

William E. Craig

* This star after a name indicates that the party has purchased a mausoleum of us.



Erected for Lorenzo R. Johnson Estate in Woodlawn Cemetery, Elmira, N. Y. Barre, Vt., granite.



Erected for G. J. Grammer Estate, Oak Hill Cemetery, Evansville, Ind. Barre granite.

Dayton, Ohio

E. M. Thresher
 Rev. S. W. Hoover Estate
 Michael McFarland
 Mrs. Caroline S. Loeb
 W. P. Callahan Estate
 J. R. DeWeese *
 Mrs. Charles A. Snyder
 F. I. Joyce
 Mrs. Jennie Lentzy

Deal, N. J.

Mrs. Daniel O'Day

Decatur, Ill.

W. F. Busher *
 Miss M. B. Ewing
 M. E. Schroder *
 A. W. Conklin*
 Mrs. S. A. Ewing
 Mrs. F. L. Hayes
 Mrs. Mary Tupper
 Henry Mueller Estate *
 Charles A. Ewing
 Miss Belle Ewing
 Mrs. James Millikin *
 Charles N. Denison Estate
 and many others

Delaware, Ohio

Mrs. O. K. Williams
 Mrs. C. A. Walker
 Mrs. Grace H. Leonard
 Mrs. W. H. Cutler
 Misses W. T. and J. M. Ropp

Delhi, N. Y.

Marshall Mitchell *

Deposit, N. Y.

C. Onderdonk
 M. Lyons Estate

Detroit, Mich.

Hon. H. S. Pingree
 Harry C. McKee
 C. S. McMillan
 Pingree Memorial Committee
 C. G. Koeltzan
 Mrs. S. S. McCrea
 Mrs. T. J. Tully
 G. W. Fowle

Dexter, Ill.

Mrs. Ross Phillips

Dillsboro, Ind.

Edgar Sweeney

Dresden, N. Y.

J. M. Ringer, Exr.

Duanesburg, N. Y.

John L. Trumbull

Dubuque, Iowa

William Watters
 W. S. Dennis
 Thomas Watters
 Mrs. F. A. Coates
 Robert Waller Estate
 Miss Kate Hargus
 W. P. Bingham
 Mrs. Anna G. Temple
 Mrs. J. P. Scott
 Mrs. Mary B. Wilson
 John B. Glover
 S. E. and J. F. Watters
 Mrs. C. R. Mains
 Mrs. F. M. S. Bailey
 Mrs. J. C. Paine
 F. W. Coates
 Mrs. Fred Bade
 Mrs. Virginia Wales
 and many others

Dunkirk, N. Y.

Mrs. Clara W. Fenn
 C. J. Houser
 Mrs. Mary A. Tullagan
 Mrs. P. J. Higgins
 John McNally
 T. E. Sheeche
 Rev. Father Mark
 Mrs. E. Frahm
 Mrs. Catherine E. Murphy
 Joseph Nelson & Co.
 John O'Connell
 Mrs. Julia N. Van Buren
 Mrs. S. D. Avery
 B. F. Aldrich

Dunlapsville, Ind.

D. T. Hewitt

Earl Park, Ind.

Mrs. Jane Hawkins Estate

East Aurora, N. Y.

Mrs. S. C. Clark
 O. C. Hoyt
 Mrs. Mary A. Darbee
 Mrs. H. N. Shattuck

East Berlin, Pa.

W. G. Leas *
 I. S. Miller

East Bethany, N. Y.

James H. Gifford
 Mrs. F. H. Nichols

East Bloomfield, N. Y.

James Shearer
 Silas Eggleston
 Mrs. Isabella E. Hurd
 Mrs. Thomas Steen
 John O'Neill

East Clarence, N. Y.

Wesley Williams

East Concord, N. Y.

Mrs. Augusta Henry
 Mrs. Emily E. Beaver
 L. K. Garfield
 Miss Viola Titus

East Northfield, Mass.

Mrs. Richard Lavery

East Pharsalia, N. Y.

C. O. Gould

Eaton, Ohio

Mrs. M. K. Walsh

Ebenezer, N. Y.

Frederick Krause
 John A. Witzig
 Mrs. Louisa Glanz
 John Karg
 Mrs. John Vogel

Eden, N. Y.

Miss Maud Willis
 C. B. Adriance
 John F. Horton
 Herman Wightman

Eden Center, N. Y.

Michael Schriener
 William Loton
 C. M. Dole
 Joseph Farmer

Effingham, Ill.

Mrs. Ross Phillips

Eggertsville, N. Y.

Mrs. S. L. Clark

Elgin, Ill.

Mrs. Estella M. Cameron

Elkhart, Ind.

Mrs. Lizzie Phinney
 Vose Estate *
 N. A. Tibbitts
 Dr. Franklin Miles
 Mrs. Alexander Gordon
 W. A. Griffin
 J. E. Holland
 Dr. F. C. Eckelman

Ellicottville, N. Y.

Timothy M. Kation
 Eugene Hickey

Elma, N. Y.

Mrs. J. A. H. Jackman

Elmira, N. Y.

Dr. Raymond B. Pratt
 Mrs. Sara L. Johnson
 Rufus S. Green
 Mrs. Emma E. Stowell

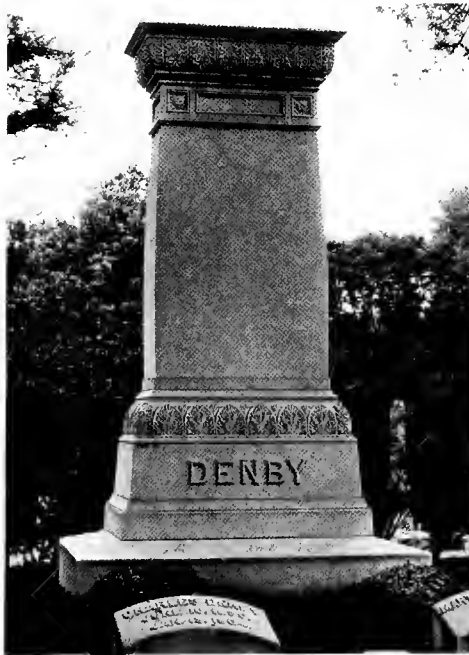
* This star after a name indicates that the party has purchased a mausoleum of us.



Erected in Oak Hill Cemetery, Evansville, Ind., for the John Laval Estate. Barre granite.



Erected in Oak Hill Cemetery, Evansville, Ind., for Mrs. Anna Torian. Quincy granite.



Erected in Oak Hill Cemetery, Evansville, Ind., for Hon. Chas. W. Denby Estate. Barre granite.



Erected in Oak Hill Cemetery, Evansville, Ind., for Mrs. E. G. Ragon. Barre granite.

Elmira, N. Y.—Con.

Mrs. W. F. Dent
John Brand
Henry J. Haase
Ferdinand Haase, Jr.
Rev. Michael O'Dwyer Estate

Elwood, Ind.

Richard L. Leeson, Jr.*
F. M. Curtis*

Emporium, Pa.

J. P. Felt

Erie, Pa.

Mrs. Harriet M. Maus
O. C. Thayer
Hon. John C. Brady Estate*
James N. Thayer
Mrs. A. B. Felgemaker
Eben Brewer Memorial
Mrs. Julia Joint
Mrs. W. L. Baker
Mrs. H. F. Watson
Miss B. McMahon
M. Sullivan
George N. Coombs*
E. W. Constable*
A. E. Kent
F. A. Mizener
B. B. Nagle
Mrs. Edward J. Riblet

Esperance, N. Y.

John L. Trumbull

Evansville, Ind.

Edward Boetticher
Mrs. Grace D. Reed
Mrs. J. M. Walker
Mrs. Martha J. Bayard
Mrs. Anna Torian
Mrs. E. G. Ragon
S. W. Douglass
A. G. Gifford
Hon. John W. Foster
Masonic Memorial
John Farrall Estate
Hon. Chas. W. Denby Estate
Mrs. Margaret Sullivan
A. C. Rosencranz
Mrs. S. W. Little
Jacob May & Sons
Robert Smith
W. H. Cutler
Dr. Wm. H. Field
Walter W. Weintz
Alvah Johnson
Capt. O. F. Jacobi
Dr. L. D. Brose
Mrs. M. C. Brandon

Evansville, Ind.—Con.

James H. Cutler
Mrs. Emily B. Drybrough
Capt. G. J. Grammer Estate
John E. Hubbs
Mrs. V. C. Read
Mrs. Wm. H. Keller
Mrs. Eva Lauten
Dr. P. Y. McCoy
Mrs. Wm. M. Newell
James L. Orr
Mrs. Florence L. Davis
Miss Esther Fink
Mrs. S. P. Gillett
John Laval Estate

Everton, Ind.

D. W. Moore

Fairport, N. Y.

Mr. P. A. Welch

Falls Church, Va.

Charles W. Parker

Fargo, N. D.

Joseph G. Dudley

Farnham, N. Y.

Mrs. Dora Borchart

Fayetteville, N. Y.

S. M. Clement

Fonda, N. Y.

Mrs. Gershom Banker

Fond Du Lac, Wis.

Boyle Bros.
Franz Rossner

Forks, N. Y.

George Lenz
Joseph C. Lutz
Mrs. Mary Pfohl

Fort Bliss, Texas

Dr. D. M. Appell

Fort Wayne, Ind.

Mrs. Catherine E. Murphy
Mrs. Hannah H. Mohr

Fowlerville, N. Y.

Anthony Taylor

Frankfort, Ind.

Mrs. J. E. Hillis

Franklin, Ind.

Mrs. Clara Fesler
R. Mathes
Mathews Estate
Miss Ellen Mathes

Franklin, Ind.—Con.

Joseph A. Schmith

Franklin, Pa.

Charles F. Mackey
Mrs. Clara B. Foster
Mrs. Sarah S. Phipps
Edward Rial
Mrs. Clara Fisher
Mrs. Florence L. Howard

Fredonia, N. Y.

Howard Bros.
Fullagar Estate
Mrs. S. I. Alton
Mrs. S. C. Brady
Harvey D. Clark
C. D. Armstrong
C. A. Brainard
Fuller-Jones Memorial
B. W. Goodell
Mrs. John Miller
Joseph Nelson & Co.
Edwards H. Pratt
Mrs. Julia N. Van Buren
D. R. Pritchard
Mrs. M. M. Fenner
Miss F. F. Hovey
Miss Helen Stevens

Galena, S. D.

C. B. Harris

Galesburg, Ill.

Thomas Keefe

Gardendale, Mich.

L. S. Skinner

Gardenville, N. Y.

Sebastian Bugman
Mrs. Mary Euscher
Fred Jenning
Miss Rose Priser
Henry Smith

Gasport, N. Y.

Mrs. John Shay

Geneseo, N. Y.

Mrs. W. B. Scoville

Geneva, N. Y.

Louis Cooley
Dr. W. McCaw
Hon. S. H. Hammond
Mrs. Michael Ryan
H. C. Schroeder
Henry Ridley
Mrs. Jos. Hutchinson
Michael Burke
Jacob Thalman
John Norris

* This star after a name indicates that the party has purchased a mausoleum of us.



Erected at Gloversville, N. Y., for John Martin. Barre granite.



Erected at Gloversville, N. Y., for Mrs. S. M. Brower. Barre granite.



Erected at Johnstown, N. Y., for Mrs. P. P. Argersinger. Barre granite.



Erected at Gloversville, N. Y., for John C. Allen Estate. Barre granite.

Geneva, N. Y.—Con.

Patrick Campion
 John Rice, Jr.
 Benjamin Bidgood
 Timothy McCarthy
 George A. Peele
 Devaney & Fletcher
 Cornelius Rosa
 Miss Margaret Root
 Newton Campbell
 Mrs. Thos. J. Wright
 John Burke
 Mrs. George Inman
 Albert J. Runga
 Preece Bros.
 John Mennel
 Otto Hungerbuhler
 Mrs. Mary E. Rodney
 Mrs. Annie Hagen
 Mrs. Anna E. Ralston
 Mrs. John Broderick
 Mrs. Mary A. Crandall
 John Rafferty
 T. Keating
 Mrs. Michael Quinn
 Patrick O'Neill, Exr.
 George Batchelder
 Andrew F. Chartres Estate
 John Charlon
 Mrs. John Culver
 James Clarke
 Mrs. Evelyn V. DeVoll
 J. W. Steel
 Raymond Del Papa
 Mrs. Peter Doran
 Mrs. M. Durkin
 Miss Mary McCarthy
 Herbert Harford
 G. W. Fowle
 Mrs. Geo. McLaughlin
 W. M. Foster
 Miss Mary E. Pembroke
 Robert F. Flood Estate
 John Griffin
 James J. Gannon
 William Hutchinson
 Mrs. Coleman Kane
 Henry U. King
 Lynch Family
 Wm. E. Preston
 Mrs. Edward Spendlove
 Miss Sarah Sweeney
 Miss Carrie Smith
 Mrs. Thos. H. Sweeney
 Mrs. James Trainor
 Mrs. Jacob Wheeler
 Miss I. Woods
 Robert D. Peters

Geneva, N. Y.—Con.

W. B. Parker
 Mrs. John Fitzgerald
 and many others
Gloversville, N. Y.
 Mrs. Abram D. Brower
 H. M. Brower
 S. H. Shotwell Estate
 John Martin
 John C. Allen Estate
 Mrs. M. J. Kennedy
 John J. Madden
 George Lynch
Goshen, Ind.
 C. C. Shafer *
Gowanda, N. Y.
 T. F. Welch
 Miss Katherine G. Hickcox
 Mrs. W. R. Smallwood
 M. N. Allen
 Mrs. E. B. West
 N. N. Vosburgh
Grand Island, N. Y.
 Mrs. John Nice
 Mr. Waterstrauss
 O. Bedell
 L. Grehlinger
Grand Rapids, Mich.
 Hon. Edwin F. Uhl Estate
Gratwick, N. Y.
 Geo. B. Hastings
Grayville, Ill.
 W. W. Gray's Sons
Green Camp, Ohio
 W. Wolfinger
Greencastle, Ind.
 Mrs. L. A. Smyser
 Hon. A. M. Lockridge
 Mrs. R. V. Barnaby
 J. W. Cole
 J. C. and J. G. Peck
Greenfield, Mass.
 J. H. Sanderson
Green Island, N. Y.
 William B. Myers
 Mrs. Christina Smith
 Mrs. Elizabeth Hathaway
 Miss Christina Lawson
Greenville, Ohio
 J. E. Breadon
 Mrs. Martha E. Miller
 W. K. Kerlin Estate
 James B. Avery Estate

Greenville, Ohio—Con.

Mrs. Mary H. Jamison
 Rev. L. E. Jones
 Mrs. Jennie Lentzy
 Mrs. Emily I. Morrow
Groton, Mass.
 Miss C. Caryl
Groton, N. Y.
 C. W. Conger
Guilford, N. Y.
 Nelson Thackwray
 H. W. Cable
Hamburgh, N. Y.
 S. M. Stuart
 J. W. Salisbury
 Mrs. Susan Monkton
 Mrs. R. F. Spencer
 George L. Pomeroy
 Mrs. F. Pratt
 Christian Ehrmann
 Mrs. Adelina Hund
 Ellen Sly Estate
 Henry Neumann
 John A. Kloefer
 Henry J. Warning
 Mrs. J. Kinnear
 Mrs. M. H. Dixon
Hamilton, Ohio
 George Krebs
Harrisburg, Pa.
 Henry Handshaw
 B. Frank Dietrick Estate
 P. H. Vaughn *
 Allen H. Kline
 James J. Dull Estate
 and many others
Haughville, Ind.
 Mrs. L. M. Craig
 A. F. Groff
Hemlock, N. Y.
 John O'Lahey Estate
Henderson, Ky.
 Mrs. Virginia A. White
Hendricks, W. Va.
 C. B. Clark
Holcomb, N. Y.
 Jas. A. and C. T. McCarthy
 James McDonnell
 Miss Maria Eggleston
 John O'Neill
 William Barry
Holland, N. Y.
 Henry Werner

* This star after a name indicates that the party has purchased a mausoleum of us.



Erected for Henry B. Smith in Elm Lawn Cemetery, Bay City, Michigan. Barre granite.



Erected for John Ehresman Estate in Forest Lawn Cemetery, Utica, N. Y. Barre granite.

Honeoye Falls, N. Y.

Mrs. B. Moran

Hornell, N. Y.

Mrs. P. Strauss

Mrs. Esther J. Shortt

Hudson, N. Y.

Mrs. Rachael Little

Indianapolis, Ind.

Hon. W. T. Durbin *

Louis E. Burkhardt

Rudolf Schwarz

Hon. Chas. W. Fairbanks

R. Kirshbaum

Mrs. Sarah R. Sawyer

John H. Vajen *

Mrs. Thesta A. Ross

George M. Fritz

J. T. Darmody

Mrs. J. E. Perkins

S. E. McCarthy Estate

Mrs. E. J. Griffith

Mason J. Osgood

A. Burdsall

Joseph Eckhouse

Nathan Morris

J. L. Keach

Mrs. E. J. Sherman

John O'Brien

Mrs. Margaret Manley

Joseph Deitch Estate *

William H. Armstrong

Mrs. Caroline Koss

Chas. Pearce

Mrs. A. G. Atkins

E. B. Martindale

A. M. Hannah

Mrs. Clara E. Mitchell

J. E. Robertson

Mrs. Elizabeth S. Yohn

J. L. Thompson

Mrs. Catherine F. Zener

Mrs. Eliza J. Knight *

Mrs. Frances Sayles

Miss Macy Coughlen

Mrs. Edward Daniels

Julius A. Hanson *

Chas. E. Hutton *

Gen. James R. Carnahan Est.

Mrs. Amanda M. O'Brian *

Mrs. B. F. Allen

C. L. Turner

Mrs. J. C. Comer

James E. Lilly

Joseph Haas

Mrs. Martha H. Saulcy

C. W. Sutton

W. W. McCrea

Indianapolis, Ind.—Con.

James J. Dissette

Mrs. C. C. Sheets

James B. Black

Major Collins Estate

Mrs. S. E. Carnahan

Henry Coburn Estate

B. W. Kirshbaum

M. O'Connor

N. Booth Tarkington *

Mrs. A. M. Sargent

Charles H. Schrader

W. B. Wells

Mrs. Lida B. Hoover

John A. Schumacher Estate

Harry Weintraub Estate

H. C. and E. F. Sharpless

Misses Jennie E. and Alice E.

Dickinson

Mrs. M. Riff

Liberty Howard

C. C. Shirley

Dr. E. Howard Estate

Mrs. Fanny Voorhees

and many others

Ionian, Mich.

Harry M. Morgan

Benjamin Vosper

Thane Benedict

Ionian, N. Y.

John O'Neill

Mary Nell

Iroquois, N. Y.

Mrs. Emily P. Lincoln

Ithaca, N. Y.

Louis P. Smith

Georgé Livermore

Jamestown, N. Y.

Ralph J. Preston *

Mrs. E. B. Crissey

Mary A. Prendergas Estate

Frederick L. Jones

George H. Ahrens

Robert C. Bradshaw Estate *

Ralph C. Sheldon *

Java Center, N. Y.

Mrs. Emma Johnson

Martin Clark Estate

Rev. John Uriel

Ella Gleason

Jefferson, N. Y.

R. G. Nichols

Jewettville, N. Y.

Adrian Metz

Johnson, Ind.

Henry S. Byers

Johnsonburg, Pa.

Louis Limber

Johnstown, N. Y.

Mrs. P. P. Argersinger

Kane, N. Y.

A. B. Cohn

Kansas City, Mo.

Mrs. Margaret N. Jackson

Kenmore, N. Y.

Mrs. Jacob P. Roesch

Kenton, Ohio

Robert Young *

Young Bros.

Mrs. C. H. Bingham

Mrs. Arthur Charles

Henry Dickson

Kenka College, N. Y.

George A. Ball

Kokomo, Ind.

Mrs. Lena Acker

A. M. Hunt

Mrs. Elizabeth McCauley

Lawrence Snider

Laconia, N. H.

Soldiers' Monument Com.

Mrs. Mary A. Herrick

La Crosse, Wis.

Mrs. Mary L. McArthur

LaFayette, Ind.

Mrs. Elizabeth Lahr

Mrs. R. S. Chase

George Seeger

Mrs. Mary B. Campbell

William Talbert

Messrs. Wilkinson

John Ross

A. E. Peck

W. S. Potter

Mrs. J. B. Wallace

Misses Ella and Florence

Steely

J. B. Seeger

R. S. Moore

R. B. Wallace

M. O'Sullivan

O. W. Peirce

William Temple

James A. Telford Estate

Mrs. A. G. Carnahan

Mrs. Sidney Johnston

Helen M. Gougar Estate

Mrs. Sarah M. Jakes

Mrs. E. S. Williams

* This star after a name indicates that the party has purchased a mausoleum of us.



Erected for Thomas H. Cunningham in Calvary Cemetery, Lincoln, Nebraska. Barre granite — Italian marble statue.

LaFayette, Ind.—Con.

David Sharp
 Mrs. F. A. Talbert
 Mrs. M. Weigele
 Dan W. Simms
 George S. Brown
 Mrs. Martha T. Murphy
 Jacob May & Sons
 Patrick O'Rourke
 D. L. Ross
 W. K. Hatt
 D. W. Skinner
 Mrs. B. F. Snyder
 William Ross
 Mrs. A. J. Roth
 Frank E. Mennen

Lake Side, N. Y.

Dr. Thomas Lothrop Estate *

Lancaster, N. Y.

Michael Basher
 Mrs. Julia Brecht
 Miss Esther Clapp
 John Reiners
 John Leiningner
 Hon. George A. Davis *
 Henry Strugel
 Rev. A. C. Kuss Estate
 Mrs. Caroline S. Harris
 Miss Evelyn Brecht
 Mrs. William Schaefer
 Fred Taellner
 J. P. Taafe

Lancaster, Pa.

David B. Smith
 Mrs. Margaret Ehemann
 Martin Bates

La Porte, Ind.

J. L. Woodmanse
 Mrs. M. J. Ridgway
 B. A. Franklin
 Mrs. J. E. Ireland
 Hart L. Weaver

La Salle, N. Y.

Miss C. Kean
 H. C. Kinsey
 E. P. Bowen
 Mrs. Caroline Smith

Latrobe, Pa.

Capt. James Peters
 Mrs. Margaret J. Metzger

Lawton, N. Y.

D. N. Parker
 Mrs. O. M. Davis

Lebanon, Ind.

V. Bell

Lebanon, Pa.

Adam Rise
 W. H. Miller
 J. M. Shenk
Leonardsville, N. Y.
 W. L. Switzer
Le Roy, N. Y.
 E. H. and J. A. Butler *
 Fred R. Gayton
 Soldiers' Monument
 Warren C. Smith
 Rufus Barr
 George G. Seyffer
 Royal Elderkin
 Mrs. Chas. Haller
 Mrs. John R. Olmsted
 Mrs. Albert Wolcott
 Albert A. Parmelee
 William F. Huck
 Albert H. Olmsted
 Mrs. Sarah Fleicher
 Charles J. Brooks
 A. H. Vaughn Estate
 Harriett Paine Estate
 William Dowdle
 Miss Ellen Reiley
 Mrs. H. B. Mansfield
 O. H. Tillou
 Mrs. Nathan Bryant
 Mrs. Elvira Seward
 Scott W. Skinner, Jr.
 William F. Huyck
 Dr. J. F. Cleveland
 Mrs. A. J. McPherson
 Mrs. H. R. L. Bissell
 Mrs. D. H. McColl
 Mrs. O. H. Sheppard
 Charles Walker
 C. N. Keeney
 Mrs. Horace Curtiss
 Miss Elizabeth Lyman
 Mrs. J. Warren
 Miss Anna Maud
 G. B. Barron
 Mrs. Henry Arnold
 Mrs. J. E. Robinson
 Fred Burr
 R. E. Whiteman
 Stanley M. Smith
 C. J. Hill
 Mrs. James Legg
 Miss Mary Slader
 Mrs. E. L. Woodward
 Rev. Earl D. Shepard
 Mrs. C. B. Wood
 and many others
Lewisburg, Ohio
 D. E. and W. H. Horn

Lewiston, N. Y.

Patrick Hanrahan
 Dr. Falkner
 George Irish Estate
 John Carter
 Mrs. E. B. Cornell
 Miss Sarah A. Kelly
 David Nickerson

Lewistown, Pa.

Clarence A. Long

Liberty, Ind.

D. P. Ernst
 Albert Davis
 Mrs. H. Shrimmer

Lima, Ohio

E. Christen

Lincoln, Neb.

Thomas H. Cunningham

Linwood, N. Y.

Mrs. George Found

Liste, N. Y.

Mrs. Fred L. Johnson

Little Falls, N. Y.

Mrs. M. J. Murphy
 D. W. Timmerman
 Mrs. K. W. Eaton
 Mrs. W. S. Allen

Little Valley, N. Y.

De Forest Hinman

Livingston, N. Y.

Chas. V. McNair

Livonia, N. Y.

J. E. Butterfield
 Miss Sarah Dowling

Lockport, N. Y.

Chas. H. Stahler
 Dr. A. R. Ferguson Memorial
 Coleman O'Shanecy
 Mrs. Mary A. Ernest
 Dr. Rolland E. Miller
 Mrs. Thomas McGum
 Mrs. Walter Williams
 Mrs. Catherine Fitzgerald
 William H. Kilborne
 Miss Sarah Fraser
 Miss Julia M. Smith
 Burt Van Horn
 Mrs. Kate Mullett
 Daniels Family Memorial
 Mrs. Goshen Conover
 Benjamin Hutcheson
 Gridley Estate
 Mrs. J. K. Gridley
 S. R. Daniels Estate
 Miss Katherine McGovern

* This star after a name indicates that the party has purchased a mausoleum of us.



Erected for Joseph Bryan Estate at Richmond, Virginia. Richmond granite.



Erected for Mrs. Emily Grummond in Floral Park Cemetery, Binghamton, N. Y. Barre granite.

Lockport, N. Y.—Con.
Dennis Lundergan Estate
Mrs. E. H. Southworth
W. A. Remington
Mrs. E. F. Goodman
Flagler Family
Rev. M. J. Kean
Mrs. Fred Webber
Mrs. Susan Mullaney
Dr. Mary C. Hurlburt
Dr. Anderson Crowforth
Chas. G. Rhodes
Mrs. Elizabeth Carter
Peter Pickard
Mrs. Catherine Coleman
Logansport, Ind.
Stephen C. Taber
Elihu S. Rice
Mrs. Frank M. Rice
Mrs. Catharine Himmelberger*
Long Branch, N. J.
Alfred H. Stockton Estate
Long Island City, L. I.
John A. O'Connor
Mrs. Jane Hawkins
Louisville, Ky.
Col. H. C. Hodges
Lovington, Ill.
M. T. Shepherd*
Stanton Adkins*
Lowell, Mass.
George E. Foster
Mrs. Mary Hapgood
Lydonville, N. Y.
Mrs. L. C. Fairman
Mrs. M. J. Waterbury
Lynchburg, Va.
Mrs. E. A. Hancock
Lyons, N. Y.
William E. Rush
Mrs. Elizabeth J. Barnhart
Mrs. E. V. DeVoll
Madison, Conn.
Mrs. L. F. Wheaton
Madison, Ind.
A. Ellis
Madison, N. J.
E. M. Elmore
Marion, Ind.
M. F. Gartland
Marion, Ohio
C. B. Merchant
Jonas Concklin Estate
Thomas Breen Estate
Mrs. F. L. Coon
R. W. Holverstott
Oliver Monnette

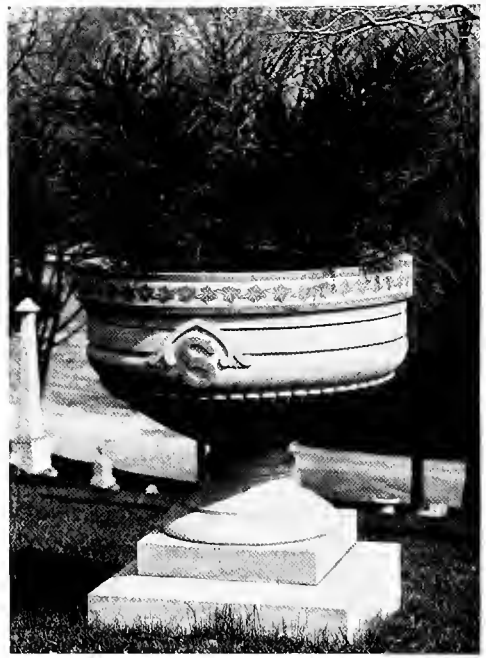
Marion, Ohio—Con.
Mrs. Mary J. Evans
Mrs. Ira J. Earnest
C. A. Beckley
Mrs. Margaret Diebold
Mrs. Catherine Kaufman
N. S. Myers
A. J. Berry
W. Imbody
B. Waddell
Mrs. Marks H. Tea
E. G. Allen
W. J. Meily
Mrs. M. S. Leonard
John F. Lust
F. B. Landon
H. C. and E. F. Sharpless
Mrs. Marks H. Tea
Dr. J. B. Taylor
George Roberts
Mrs. Eliza Cusick
Mrs. Rosa Lust
and many others
Marshall, Mich.
L. F. Page*
George H. Southworth*
McConnellsville, N. Y.
Horace Morse
Mechanicsburg, Ill.
Mrs. Cyrus Wheeland
Medina, N. Y.
Judge E. B. Simonds Estate
U. D. Coon
George F. Brownell
Mrs. George E. Spooner
Miss Kate L. Ryan
Mrs. Susan M. Davey*
Volney A. Acer Estate
Hon. H. A. Childs
Mrs. Myra H. Beach*
Mrs. W. B. Robbins
James M. Frary Estate
Mrs. Francis Maher
Philip Bannan Estate
Mrs. Albertine Butz
Mrs. Bertha Butz
Frank S. Cobb
L. M. Erion
J. L. Helenbolt
L. S. Ives
Mrs. Frederick W. Murdock
Catherine Stanton Estate
Miss M. Ella Wilkinson
Mendon, N. Y.
Mrs. Bridget Mead
Mertensia, N. Y.
John Ryan

Metcalf, Ill.
William Jones
Michigan City, Ind.
Mrs. A. B. Ames
Middleburg, N. Y.
Asa S. Dutton Estate
Middletown, Pa.
E. J. Miller
Millersburg, Pa.
Mrs. Mary R. Koppenhauer
Milo, N. Y.
Mrs. John Cahill
Minneapolis, Minn.
Frank W. Forman
Miss Katherine L. White
William W. Folwell
Mrs. Mark D. Flower
Monmouth, Ill.
L. A. Warner
Montclair, N. J.
Mrs. Frances Caughlin
Montezuma, Ind.
Mrs. Nancy Brown
Montreal, Que.
H. J. Fuller
Morrat, Ohio
Mrs. Irene Scobey
Mt. Carmel, Pa.
Schneider Brothers & Co.
Mt. Morris, N. Y.
H. H. Seymour
Jennie S. Ellicott Estate
Mrs. E. P. Pattison
Mt. Vernon, N. Y.
Mrs. G. H. Primrose
Mt. Vernon, Ohio
Mrs. C. H. Kelsey
Mumford, N. Y.
Mrs. David Nicholls
John McCorkindale
Muncie, Ind.
C. P. Franklin
Mrs. J. W. Burson
John Reid
Naples, N. Y.
Robert T. Porter Estate
Narragausett Pier, R. I.
Peleg Brown
Natick, Mass.
Dr. Wm. Richards
New Albion, N. Y.
J. M. Lyons

* This star after a name indicates that the party has purchased a mausoleum of us.



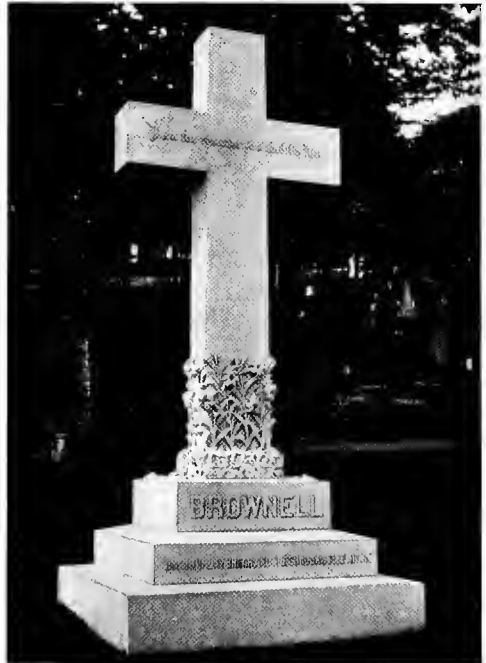
Erected in Crown Hill Cemetery, Indianapolis, Ind., for Mrs. A. M. O'Brian. Barre granite.



Erected in Forest Lawn Cemetery, Buffalo, N. Y., for Hon. James M. Smith. Barre granite.



Erected in Brookside Cemetery, Watertown, N. Y., for George C. Sherman. Westerly granite.



Erected at Medina, N. Y., for Geo. F. Brownell, Vice-President and General Solicitor of the Erie R. R. Co. Barre granite.

Newark, N. J.
 C. B. Clark
New Berlin, N. Y.
 A. D. Sprague
 Mrs. Grace Chapin Barton
New Brunswick, N. J.
 Mrs. H. C. Hooker
 Mrs. J. H. Tapping
New Castle, Ind.
 Hon. A. C. Bartlett Estate
 L. A. Jennings *
New Castle, Pa.
 Mrs. John Mohr
New Lebanon, N. Y.
 Samuel Tilden Estate
Newport, R. I.
 Sarah T. Zabriskie Estate
New York, N. Y.
 Rev. Geo. C. Houghton, D. D.
 Trainor W. Parks
 Marshall O. Roberts
 Rev. Sanford Hunt
 George F. Brownell
 Mrs. Mary A. Shea
 J. W. Crowell
 Miss A. C. Lamb
 B. E. Cartwright
 Mrs. C. W. Hattler
 Henry Prentiss
 Mrs. Susan Bevier *
 Willis Dodge
 Miss Kate Hayes
 W. R. Lynch
 Mrs. F. Brooks
 Mrs. Martha Brackenburt
 Mrs. Libbie E. Cone
 C. H. Daniels, Exr.
 McKim, Mead & White
 Miss L. G. Cook
 David Galbraith
 Daniel O'Day
 William B. Howland
 H. B. Chamberlain
 Dr. Chas. G. Miller
 Mrs. H. C. Hooker
 Mrs. George W. Huttler
 Col. Franklin Allen
 Mrs. Joseph H. Lumley
 J. Midaugh Main
 Hon. John W. Goff
 Mrs. Mary A. Herrick
 Lieut. Godfrey Carden
 Mrs. S. G. McNerney
 Stephen J. McGarrigle
 Chauncey Olcott
 John A. O'Connor
 William G. Preston

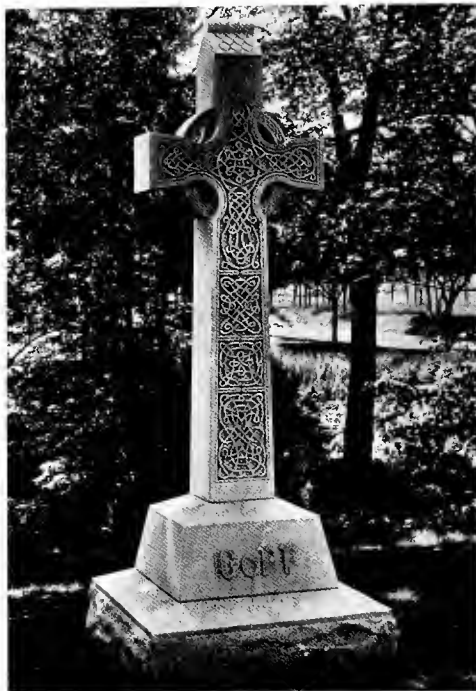
New York, N. Y.—Con.
 Mrs. H. M. Snyder
 J. L. Shea
 Mrs. Vernon M. Davis
 H. Wronkow *
 George N. Coombs *
 J. J. McGrane *
 P. B. Riley
 J. D. Plumb
 Harrison Williams
 I. & M. Borchardt *
 Mrs. Wm. D. Savidge
Niagara Falls, N. Y.
 Mrs. F. R. Delano
 Rev. W. W. Walsh
 J. K. Knibbs
 Mrs. Ellen Davis
 Mrs. Sarah Clark
 Mrs. W. L. Lamont
 Mrs. John Salt
 Mrs. Laura Clark
 J. F. Smith
 J. T. Brundage *
 Mrs. Mary Maher
 Gen. L. W. Pettibone
 Mrs. D. A. Kelly
 Mrs. James F. Gluck
 Mrs. George H. Lyon
 Mrs. Martha L. Young
 Mrs. H. S. Ware
 Isaac Davy
 Patrick McMahon
 J. Reynolds
 Frank E. Reid
 William B. Rankine Estate
 Mrs. E. F. Olmsted *
 James F. Murphy
 Hon. Stanislaus P. Franchot
 Estate
 James D. Williams
 Thomas J. Flynn
 Mrs. Patrick F. King
 Peter Daly
 Hon. James S. Simmons *
 W. M. Harrigan
Niagara Falls, Ont.
 Mrs. W. Webster
Niagara-on-the-Lake, Ont.
 Mrs. Charles Baur *
Nichols, N. Y.
 David T. Folk
 William Yearsley
 Mrs. Phebe Olmstead
Norfolk, Va.
 C. S. O'Brien
Northampton, Mass.
 J. Francis Dehey

North Collins, N. Y.
 Mrs. C. R. Smith
 Mrs. Maria Wiest
North East, Pa.
 Mrs. S. C. Brady
North Evans, N. Y.
 Mrs. H. S. Sanders
 Mrs. C. H. Fales
 Miss Helen Ronke
North Harpersfield, N. Y.
 R. G. Nichols
Norwich, Conn.
 Mrs. Marion B. Wright
Norwich, N. Y.
 Mrs. David Follett
 Thomas D. Scott
 C. W. Olendorf
 O. Hale
 Miss A. Hewitt
 Dr. James H. Westcott
 Jos. L. Latham Estate
 George Payne
 Mrs. M. L. Steward
 S. Church
 Mrs. R. P. Waite
 B. J. Mulligan
 Mrs. Mary E. Lewis
 W. R. Cole
 Mrs. M. Foy
 S. W. Berry
 Anthony S. Roberts Estate
 and many others
Oakfield, N. Y.
 G. W. Derck
Oakland, Cal.
 Hugh Hogan
Oak Park, Ill.
 Mrs. C. R. Heneage
 Hiram M. Meyers
Ogdensburg, N. Y.
 John Hannan
Oil City, Pa.
 William Parker
 William Hasson
 Geo. W. and H. C. Roess
 Miss Annie Wheelock
 L. M. Bowen
Olean, N. Y.
 Charles S. Cary Estate
 Mrs. Catherine Metzger
 F. H. McGiverson
Olyphant, Pa.
 Mrs. A. L. Schubmehl
Oneida, N. Y.
 Mrs. W. A. Stone
 Dr. F. C. Drake

* This star after a name indicates that the party has purchased a mausoleum of us.



Erected for John Stewart Bryan, Richmond, Va. Barre granite.



Erected for Hon. John W. Goff in Kensico Cemetery, New York City. Barre granite.



Erected for Rev. Michael O'Dwyer Estate, Elmira, N. Y. Barre granite.



Erected for Joseph O'Connor Estate, Rochester, N. Y. Barre granite.

Oneonta, N. Y.
 Ransom Mitchell *
Ontonagon, Mich.
 Peter Mitchell
Orchard Park, N. Y.
 Gilbert Schmidt
 Mrs. Sally A. Reed
 S. A. Willey
 Mrs. Elizabeth Bauer
 Joseph Naab
 William H. Little
 Frank Murphy
 August Krueger
 J. D. Bachman
Orleans, N. Y.
 Henry U. King
Oswego, N. Y.
 George B. Hastings
 Mrs. E. A. Gere
Otego, N. Y.
 F. B. and C. W. Enderlin
Otto, N. Y.
 J. S. Finch
 Henry Gold
 Mrs. E. M. Pool
Overton, Texas
 J. M. Daniel
Ovid, N. Y.
 E. W. Krugg
 John Craven
 Hugh McGhan
 Mrs. James Jeffrey
 Mrs. Rose French
 Mrs. Thomas Stafford
 Mathew McGinnis
 Mrs. William McElroy
 Miss Kate Killen
 Mrs. Fred Williams
 Joseph Morgan
 James O'Connell
Owego, N. Y.
 E. W. Muzzy
 F. M. Curtis *
Oxford, N. Y.
 E. B. Ryan
 J. Packard
 J. S. Tracy
 Mrs. William Tracy
 114th Regt. Memorial
 W. H. Lally
 Chas. Hunter
Palmyra, N. Y.
 Mrs. Anna C. Conway
 Isaac B. Houyck
Pardus, Pa.
 Edward Newton

Paris, Ill.
 Henry Henn
 Mrs. Matilda Wright
 Henry Rives
 Mrs. Pauline P. Culbertson
 A. J. Baber *
Paterson, N. J.
 George Greaves
Pavilion, N. Y.
 W. L. Bradley, Exr.
 John H. Gorton Estate
 Mrs. James Legg
Pembroke, Ky.
 W. W. Weintz
Penn Yan, N. Y.
 Barney Borgman
 Mrs. Margaret Craugh
 Edward Grady Estate
 Mrs. J. R. Creary
 Mrs. John Cahill
 William Costello
 Mrs. Mary A. O'Hara
 Mrs. Charles Kelly
Perry, N. Y.
 Rev. P. J. Berkery Estate
Pern, Ind.
 W. B. McClintic
 C. R. Cox
Phelps, N. Y.
 William Curry
Philadelphia, Pa.
 Mrs. Chas. W. Sweeney
 Daniel Welsh
 Ezra Levinson
 William F. Dreer
 William D. Kelly
Piqua, Ohio
 Mrs. C. E. Leonard
 Gen. Wm. P. Orr *
Pittsburgh, Pa.
 David L. Starr *
 Geo. B. Anderson
 A. B. Reid
 W. D. Phelan
 Edward Metzger
 Hon. Robert S. Frazer *
 John H. Claney
 A. J. Claney
Pittston, Pa.
 Joseph L. Cake
Plainfield, N. J.
 Mrs. S. Elma Thayer
Plato, N. Y.
 Mrs. S. Blohm
Platteville, Wis.
 Mrs. Ella M. Huntington *

Port Chester, N. Y.
 Harvey D. Clark
Port Colborne, Ont.
 Samuel Hopkins Estate *
Port Henry, N. Y.
 W. D. Daley
Portville, N. Y.
 Hon. W. E. Wheeler
Poughkeepsie, N. Y.
 Mrs. G. B. Wilson
Preston, N. Y.
 Mrs. W. A. Brown
 Mrs. Ruth Maxiom
Providence, R. I.
 Edward G. Buckland
Quincy, Ohio
 G. A. Cost
Randolph, Mass.
 Rev. D. J. Gleeson
 William O'Brien
 Rev. Jas. O'Brien
Randolph, N. Y.
 Miss Elva Lee
 Mrs. Anna S. Lee
 Warren Dow
Ransomville, N. Y.
 Mrs. J. A. H. Jackman
 John F. Schultz
 Mrs. R. A. Van Keuren
Richfield Springs, N. Y.
 Gen. Geo. S. Field
Richmond, Ind.
 Mrs. E. J. Braffett
 Mrs. J. B. Craighead
 Samuel W. Gaar
 William G. Scott
 Robert L. Jenkins
 Mrs. C. Hoerner
 George L. Klein
 E. G. Vaughan
 Mrs. J. Lichtenfels
 Ira Swisher
 George H. Eggemeyer
 J. Starr
Richmond, Va.
 Joseph Bryan Estate
 John Stewart Bryan
Riverside, Cal.
 Mrs. Chas. E. Kennedy
Rochester, N. Y.
 Hiram Sibley Estate
 Mrs. Alfred Wright
 H. B. Hathaway
 James E. Briggs
 Hiram L. Barker
 John P. Farber

* This star after a name indicates that the party has purchased a mausoleum of us.



Erected for Estate of P. L. Kimberly in Oakwood Cemetery, Sharon, Pa. Barre granite.

Rochester, N. Y.—Con.

Frank W. Embry
 J. Forbes Potter
 Mrs. Edward Brown
 F. A. Brownell
 Bevier Estate *
 Mrs. Kate H. Martin
 Frank Ritter*
 Dr. Shaw Memorial
 Dr. W. F. Sheehan Memorial
 B. N. Martin
 Henry Goold
 Louis W. Moore
 T. R. and W. J. Baxendale
 Mrs. Eva Connor
 Mrs. J. E. Murphy
 Michael Driscoll
 William Cullen
 Rev. Earl D. Shepard
 Mrs. O. H. Sheppard
 Mrs. Joseph Heberling
 William M. Kent
 John E. Bowen
 Mrs. Emily C. Carroll
 LeRoy G. Conly
 Mrs. Margaret Creary
 Mrs. J. R. Creary
 Miss Sarah Dowling
 Joseph O'Connor Estate
 Mrs. J. Obringer
 W. H. Price
 Jacob Slager
 Dr. A. D'Alfonso
 Adolph Schmidt
 Mrs. Elizabeth Townley
 T. S. Upton
 Fred Thiem
 Miss K. A. Rigney
 Miss Minnie Roesner
 Michael J. Thein
 Emil Schlieter
 Edward S. Loysen
 Mrs. Eva Reh
 M. A. Yauch
 Mrs. A. D. Vosseler
 Henry Kramer
 Frederick Neuer
 Michael Spang

Rockdale, N. Y.

Mrs. Henry J. Mudge

Rome, N. Y.

Wm. R. Huntington
 Henry Huntington

Roxbury, Mass.

J. H. Wells
 Mrs. Catherine Pendergast
 Mrs. Emma E. Ware

Rushville, Ind.

Mrs. J. P. Guffin
 Mrs. M. J. Bohannon
Saginaw, Mich.
 Mrs. Sarah C. Coplin
 Mrs. Wm. C. McClure
St. Catharines, Ont.
 Hugh E. McSloy
 James Munro
St. Louis, Mo.
 Hon. Henry Ziegenhein
 H. C. Koenig
 John N. Champion
 John E. Hubbs
St. Marys, Pa.
 Dr. William Kaul *
 John Kaul *

St. Paul, Minn.

Joseph E. McWilliams
 Butler Bros.
 Mark D. Flower Estate
St. Thomas, N. D.

James Whelan

St. Thomas, Ont.

Miss A. Potts
Salamanca, N. Y.
 Mrs. Elizabeth Town
Salisbury, Conn.
 Mahlon A. Gibbs
 Valentine J. Newman

Sandusky, N. Y.

Mrs. Mary W. Beebe

Sardinia, N. Y.

Henry Werner
 Ralph Morgester
 L. H. Beasor

Saxtons River, Vt.

James K. Bancroft Estate

Schenectady, N. Y.

Charles A. Brandt

Scottsville, N. Y.

Ed. P. and Thomas Brown

Scranton, Pa.

William H. Gearhart

Seneca Falls, N. Y.

E. W. Krug
 Richard Costello

Sharon, Pa.

P. L. Kimberly Estate
 Charles Bowers *
 Forker Estate *

Mrs. Mary L. Budd

John Lee Estate

V. M. Delameter

* Mrs. Elizabeth McGill

Sheffield, Pa.

Byron B. Horton
 J. H. Horton
 Mrs. Isaac Horton
 C. H. Smith
 Mrs. George Horton
 Mrs. Eunice L. Horton
 Mrs. Walter Horton

Shelbyville, Ind.

J. S. Jeffers
 John Beggs *
 Thomas Devol
 Mrs. S. M. Moore
 Dr. Jesse K. Jameson Estate

Sheldon, N. Y.

Martin Mock
 Rev. Ferdinand Kolb

Sheridan, N. Y.

N. H. Garlock
 David Rodgers

Sidney, N. Y.

H. A. Skinner

Silver Creek, N. Y.

Charles H. Lee Estate
 Franklin Lee

Silverton, Colo.

Thomas H. Kane

Slingerlands, N. Y.

E. W. Muzzy

Sloan, N. Y.

John Schmalzbauer
 George Meadoway

Smethport, Pa.

Henry Hamlin *
 Walter Williams *
 S. D. Lemen

Smithville, N. Y.

M. C. Lewis

Smyrna, N. Y.

James H. Dimmick

Somerset, N. Y.

William A. Sawyer

Sonyea, N. Y.

Mrs. Chas. B. McNair

South Bend, Ind.

J. F. Deacon
 Mrs. P. A. Kirby
 William Knobloch
 William W. Lewis
 C. H. Murdock
 Mrs. Martha E. Hillier
 St. Joseph County Commis-
 sioners

John C. Ellsworth
 Martin L. Wenger

* This star after a name indicates that the party has purchased a mausoleum of us.



Erected for George Laub Estate in Forest Lawn Cemetery, Buffalo, N. Y. Barre granite.



Erected for William Connors in St. Mary's Cemetery, Troy, N. Y. Barre granite.

South Bend, Ind.—Con.

Albert G. Cushing
B. F. Dunn
Mrs. Laura A. Stedman

South Wales, N. Y.

Mrs. Clark Tiffany
Judge E. K. Emery

Spokane, Wash.

R. H. Voorhees

Springbrook, N. Y.

John Barnett

Springfield, Mass.

Mrs. W. S. Humphrey

Springville, N. Y.

Dr. K. J. Donahoe
Mrs. E. R. Hill
Mrs. Ida M. Wright
B. F. Aldrich
C. S. McMillan
Asa R. Taber
David S. Ingalls Estate
Robert H. Gardner
Edwin Wright
Mrs. Henry Felton
Peter Salzter
Mrs. George W. Baker
M. J. Gorman

Springwater, N. Y.

Hiram Becker
Wm. J. Leahy

Stafford, N. Y.

M. Pamphilon
William Hillman
Thomas Passmore
Eli Empie

Stanley, N. Y.

John Charlton
William H. Thacher
J. J. Cross
Mrs. Frank McCarrick

Steelton, Pa.

Geo. W. Cumbler Estate *
Solomon Zimmerman *

Stone Church, N. Y.

Mrs. Elvira Seward

Sturgeon Bay, Wis.

Mrs. P. C. Keogh
A. W. Lawrence

Sullivan, Ill.

M. McDonald *

Sunbury, Pa.

T. C. Dissinger
W. H. Druckemiller

Suspension Bridge, N. Y.

Mrs. Mary Schumacher
Fathers of Niagara University

Susquehanna, Pa.

Patrick Madden

Swormville, N. Y.

Mrs. William Bergman
George Roethel
Jacob Braunscheidel

Syracuse, N. Y.

Alex. T. Brown
M. Raskower
Mrs. William H. Sherman
Edwin H. Shepard

Terre Haute, Ind.

Mrs. Rhoda McQuilkin
Ola Mankin
Mrs. Caroline McCalla
A. Z. Foster Estate
Mrs. Wm. E. McLean
Robert S. Cox
Mrs. Louise B. Michel
Mrs. Chas. H. Rockwell
Mrs. J. P. Crawford *
Mrs. Chas. Baur *
E. E. and A. D. Ehrmann
J. E. Beggs *
Mrs. A. J. Crawford *
Mrs. Kate Kidder
Mrs. M. L. O'Riley
Mrs. Walter S. Allen
Debs Family

Tewksbury Centre, Mass.

Oblate Fathers

Thorntown, Ind.

Mrs. Rebecca M. Boyd

Tidioute, Pa.

Henry H. Cumings
Mrs. M. R. Hunter
L. L. Hunter

Tientsin, China

E. K. Lowry

Titusville, Pa.

Thomas McNamara Estate
F. G. Bellamey
Mrs. Ellen Lowry
George W. McNamara
Mark P. Kerr

Tonawanda, N. Y.

Hon. W. H. Follette
Mrs. Wm. F. Dier
Mrs. Catherine Cole
William Fritz, Sr.
Mrs. Mary E. Cooley
John Cosgrove
Mrs. Julia S. Giveen

Tonawanda, N. Y.—Con.

J. P. Christgau
Mrs. Maria E. Murray
A. C. Campbell
Hinkey Estate
Mrs. Albertine Butz
Mrs. John A. Hoffman
Mrs. William Goodfellow
Mrs. Bertha Butz
Mrs. Cornelius Collins
Mrs. Chas. G. Doebler
Jacob DeGlopper Estate
Joseph E. Gilmore
Fred Pfanner
Mrs. Margaret Welzel
T. J. Wilson
Mrs. S. H. Hobbie

Toronto, Ont.

Mrs. H. S. McMann
William J. Mitchell
George Broughall
Mrs. Sarah F. White
John A. Morton
R. E. Gibson

Towanda, Pa.

M. Updyke Estate

Trenton, N. J.

Dr. William Finney
Gen. Geo. B. McClellan
Memorial

Troy, N. Y.

William Connors
Mrs. Richard Mooney
John Stanton
J. J. McGrane *

Trumansburg, N. Y.

Mrs. Mary McElroy
Mrs. Clara T. Maus

Tully, N. Y.

A. J. Rockwood

Union, N. Y.

Lois E. Day

Uniontown, Pa.

W. H. Playford
C. A. Bergman

Utica, N. Y.

John Ehresman Estate
Rev. Nicholas J. Quinn
Mrs. Fannie W. Johnson

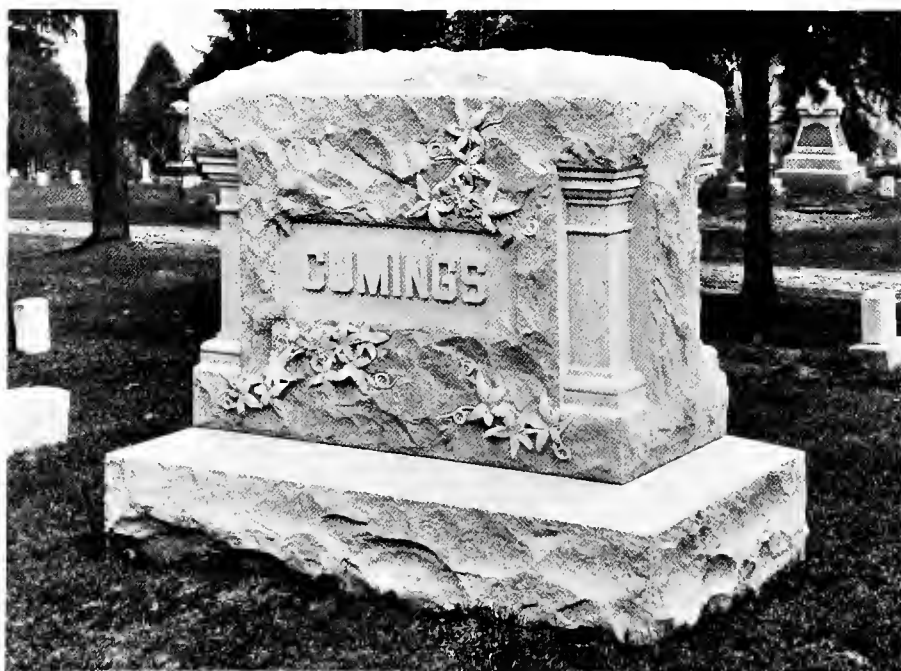
Victor, N. Y.

Mrs. William Barry
Patrick Mulheron
William Goldrick
John Ganney
Mrs. Ellen Keefe
William Ryan

* This star after a name indicates that the party has purchased a mausoleum of us.



Erected for Brig.-Gen. R. C. Drum Estate in Arlington Cemetery, Washington, D. C. Barre granite.



Erected for H. H. Cumings at Tidioute, Pa. Barre granite.

Vincennes, Ind.

George Linthwaite

Wabash, Ind.

Mrs. Chas. H. Rockwell

Thomas McNamee *

Wadsworth, Ohio

Jacob Detweiler *

Waltham, Mass.

James R. Bickford

Warren, Ohio

Hon. George M. Tuttle

Warren, Pa.

Col. Fred E. Windsor

Soldiers' Monument

George Ball

Mrs. Carrie Y. Horton

Charles D. Crandall

Warsaw, N. Y.

J. C. Buxton

W. W. Hawley *

Walter B. and W. G. Fargo

Mrs. B. B. Conable

Mrs. E. A. Woernley

Washington, D. C.

Brig. Gen. R. C. Drum Estate

Mrs. James F. Meline

Mrs. Wm. M. Newell

Mrs. Peter Latterner *

Marco Laurenzi *

Fletcher White

Hon. John W. Foster

Hon. Chas. W. Fairbanks

Frank J. Owen

T. A. Harding

James M. Starr

Gen. R. L. Hoxie

John F. Cook Estate

Charles A. Clark

Washington, N. J.

H. C. Hooker

Washington, Pa.

Mrs. Michael Egan

Waterford, N. Y.

Mrs. Julia A. Brown

Waterloo, N. Y.

Mrs. Ellen Broadshaw

Bert Maloney, Exec.

Miss Mary Welch

N. B. Tubbs

E. H. Lisk

Isadore Hahn

Mrs. Hannah O'Neill

Mrs. Levi Buchmann

Watertown, N. Y.

Isaac P. Powers

George C. Sherman

Mrs. Henry Hareford

W. W. Taggart

James R. Miller

Waukesha, Wis.

Mrs. I. M. White

Charles E. Nelson

Mrs. August Diemann

C. A. Haertel *

Soldiers' Monument

Wayland, N. Y.

Hon. W. W. Clark *

Webster, N. Y.

Mrs. Charles Rood

Wellsville, N. Y.

Levi Frank

Rev. John H. Brown

Thomas Sheehan

J. J. Bannister

Henry Mangan

Westboro, Mass.

George H. Greenwood

West Falls, N. Y.

George Reading

Westfield, N. Y.

Miss Marion E. Brown

Orson Simmons Estate

West Lebanon, Ind.

Mrs. Maria Caruthers .

West Point, N. Y.

U. S. Military Academy

Col. John Byrne

Weymouth, Mass.

Maurice Keohan Estate

Mrs. Jennie Dembroeder

What Cheer, Iowa

S. W. White

Whiteland, Ind.

Mrs. Tillie Brooks

Whitney Point, N. Y.

Joseph McCallum

Frank Wilcox

Wilkes-Barre, Pa.

Arthur Hillman

Willard, N. Y.

Miss Kate Killen

Miss Elizabeth Merriman

Miss Elizabeth McKittrick

Mrs. James Quinn

Mrs. Kate Ryan

Willard, N. Y.—Con.

Mrs. M. Staght

Thomas Martin

Peter Rafferty

Williamsport, Ind.

Mrs. M. A. Bowlus

Mrs. McPherson

Williamsport, Pa.

C. M. Patterson *

Henry and S. S. Brown *

Irvin Estate *

W. E. Sprague Estate *

Dr. Thos. C. Rich Estate

Williamsville, N. Y.

Mrs. Grace Ely

Mrs. D. Trull

Martin F. Long

Mrs. John A. Hoffman

Mrs. Jos. H. Lumley

John F. Koch

Wilson, N. Y.

Thomas Exsley

Mrs. Rachael M. Cranston

Mrs. Emma Adams

Winchester, Va.

114th N. Y. Regt. Memorial

Wingate, Ind.

Mrs. Nancy S. Myerly

Mrs. Elmira Chilcote

Mrs. Abigail Hixson

Woburn, Mass.

Thomas C. Quinn

Woodhull, N. Y.

Miss Carrie D. Stroud

Worcester, N. Y.

Mrs. G. W. Westcott

York, Pa.

Mrs. Ellen Heindel

Youngstown, N. Y.

Mrs. Ann Benson

Youngstown, Ohio

Dr. W. L. Buechner *

James V. Morris

E. Mason Wick

Ralph J. Wick

John T. McConnell *

James Squire *

Wm. F. Maag

Chas. H. Owsley *

Ypsilanti, Mich.

Hon. Edward F. Uhl

Zelenople, Pa.

David L. Starr *

* This star after a name indicates that the party has purchased a mausoleum of us.



Erected in Oak Hill Cemetery, Crawfordsville, Ind., for Dr. J. F. Davidson. Barre granite.



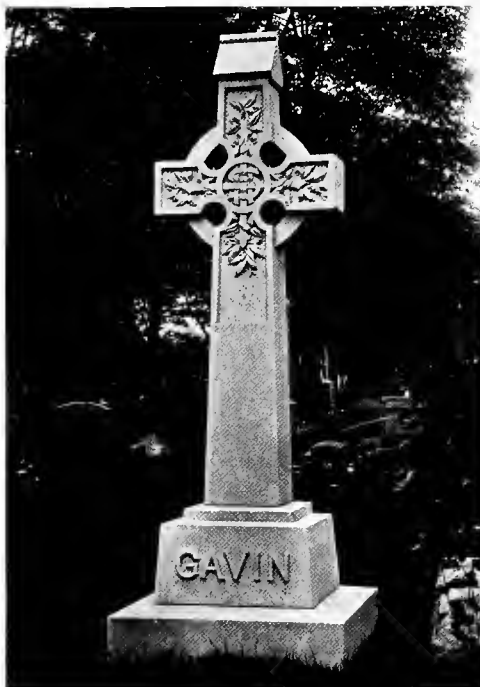
Erected in Mt. Hope Cemetery, Rochester, N. Y., for Alfred P. Wright Estate. Hallowell, Maine, granite.



Erected in Brookside Cemetery, Watertown, N. Y., for W. W. Taggart. Barre granite.



Erected for Farrar-Holloway Estates, Forest Lawn Cemetery, Buffalo, N. Y. Quincy granite.



Erected for Joseph E. Gavin, Holy Cross Cemetery, Lackawanna, N. Y. Barre granite.



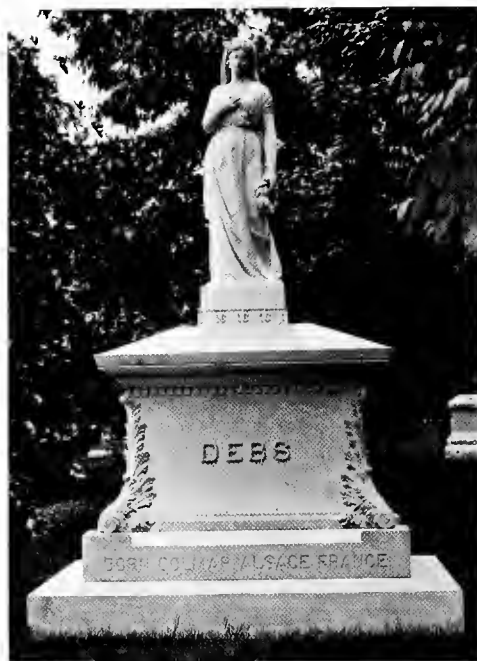
Erected for Madison Buell, Forest Lawn Cemetery, Buffalo, N. Y. Barre granite.



Erected for Estate of Elizabeth Fries, U. G. & F. R. C. Cemetery, Buffalo, N. Y. Barre granite.



Erected for Mrs. Frances T. Sayles, Indianapolis, Ind. Barre granite.



Erected for the Debs family at Terre Haute, Ind. Barre granite.



Erected for Hon. S. H. Hammond, Geneva, N. Y. Freeport, Me., granite.



Erected for William Hurley, Buffalo, N. Y. Freeport, Me., granite.

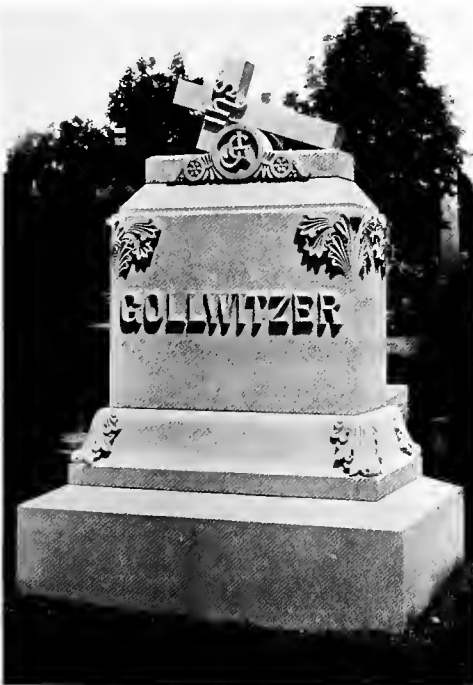


Cottage or Square Style with Cross.



Rustic Carved Cross Design.

Cross Monuments Erected by Us



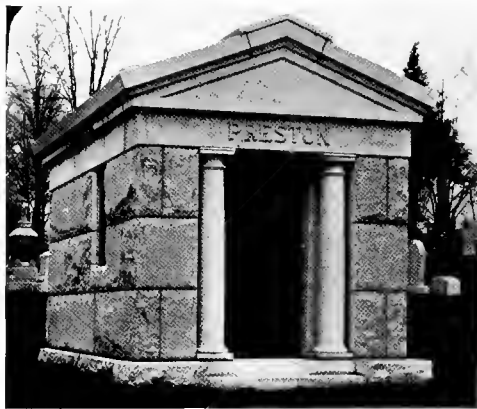
Sarcophagus Design with Reclining Cross.



Moderate priced Cross Design.



Erected for L. Franklin Messer, Forest Lawn Cemetery, Buffalo, N. Y. Barre granite.



Erected for Ralph J. Preston, Lake View Cemetery, Jamestown, N. Y. Barre granite.



Erected for C. M. Patterson, Wildwood Cemetery, Williamsport, Pa. Barre granite.



Erected for F. C. M. Lautz Estate, U. G. & F. R. C. Cemetery, Buffalo, N. Y. Barre granite.



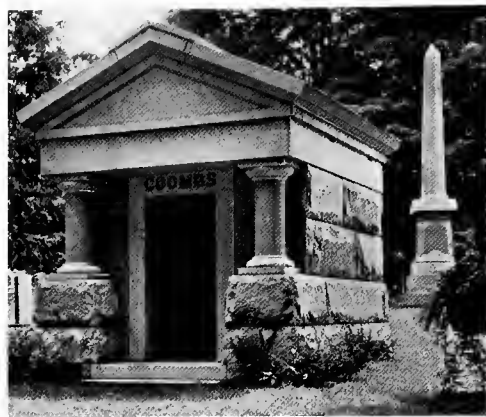
Erected for Bevier Estate, Mt. Hope Cemetery, Rochester, N. Y. Barre granite.



Erected for Robert C. Bradshaw Estate, Lake View Cemetery, Jamestown, N. Y. Barre granite.



Erected for A. W. Conklin, Greenwood Cemetery, Decatur, Ill. Barre granite.



Erected for George N. Coombs, Erie City Cemetery, Erie, Pa. Barre granite.



Erected for Henry Mueller Estate, Greenwood Cemetery, Decatur, Ill. Barre granite.



Erected for Hon. Robert S. Frazer, Homewood Cemetery, Pittsburgh, Pa. Barre granite.



Erected for George W. Cumblor Estate, Churchville Cemetery, Steelton, Pa. Barre granite.



Erected for George J. Record, Glenwood Cemetery, Conneaut, Ohio. Barre granite.

Cornell University Library
NB 1800.M47

Memorials.



3 1924 016 182 010

fine

